

Appearance & Shape: To be free from any defect such as flow, burrs, unevenness etc, as per IEC standards.
 Effective Parameters irrespective of material grade (per set)

Parameter	Value	Unit
Effective Length (L_e):	44.0	mm
Effective Area (A_e):	98.0	mm ²
Effective Area (A_{min}):	90.0	mm ²
Effective Volume (V_e):	4310.0	mm ³
Approximate weight(m):	22.0	g/set



“Clamping force for AL measurement is 60 ±20 N, unless otherwise stated”

RM10S Un-gapped (OL)

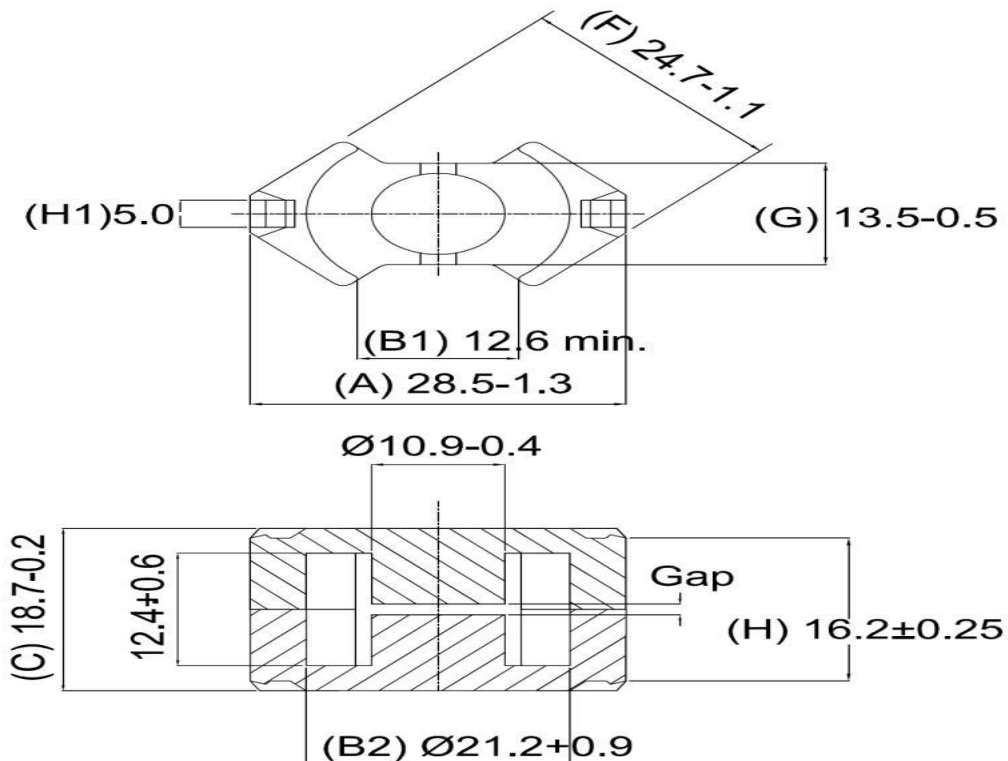
Test Conditions: 1kHz/1mT/CFR COIL, N=100/25°C

Material Grade	Initial Permeability(μ_{iac})	AL Value (nH)	μ_e Approx./Set	P_v (W/set) (25kHz,200mT, 100°C)	P_v (W/set) (100kHz,100mT, 100°C)	P_v (W/set) (100kHz,200mT, 100°C)
CF139	2100±20%	4200 +30%/-20%	≈1500	< 0.52	< 0.41	< 2.30

RM10S Gapped

Test Conditions: 1kHz/300mV/CFR COIL, N=100/25°C

Material Grade	AL(nH) Approx. /Set	S, T		D	
		Gap Value in mm/Pc	μ_e Approx./Set	Gap Value in mm/Pc	μ_e Approx./Set
CF139	100 ±3%	≈1.2	≈36	≈0.60	≈ 36
CF139	160 ±3%	≈0.76	≈56	≈0.38	≈ 56
CF139	250 ±3%	≈0.47	≈89	≈0.24	≈ 89
CF139	315 ±5%	≈0.37	≈112	-	-
CF139	400 ±5%	≈0.28	≈146	-	-



Prodin Ferrite S.L.

CalleA, 27, 08620 Sant Vicenç dels Horts, Barcelona (Spain)

Tel.: +34 93 672 46 10

info@prodinferrite.com www.prodinferrite.com