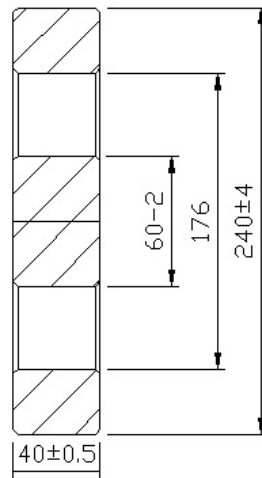
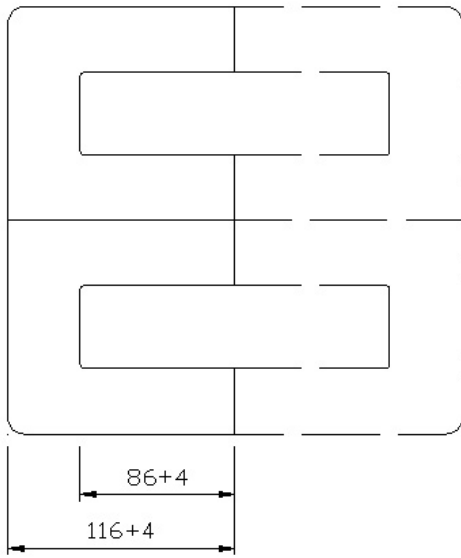
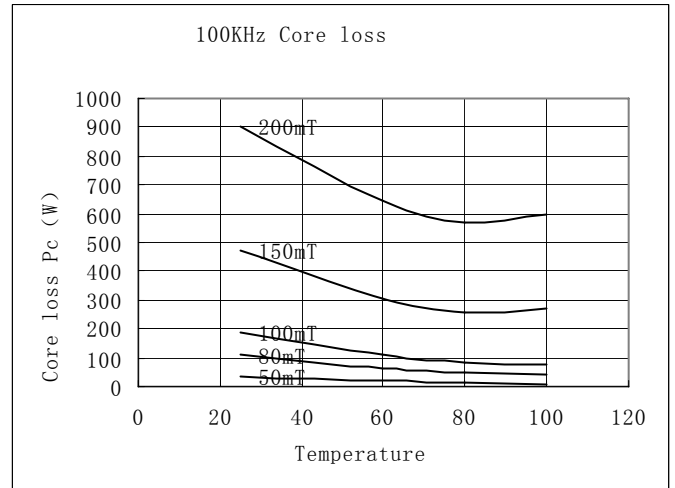
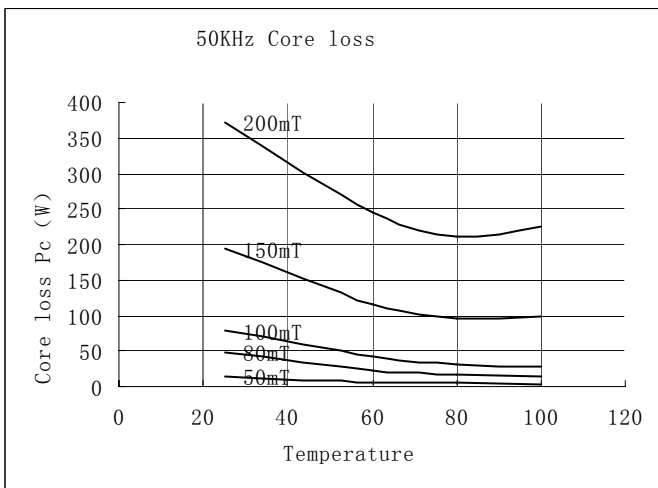


# EE240



Parameter	Symbol	Value	Unit
Core constant	C1	0.229	mm <sup>-1</sup>
Effective path length	Le	550	mm
Effective area	Ae	2400	mm <sup>2</sup>
Effective volume	Ve	1429120	mm <sup>3</sup>
Inductance factor	AL	11300	nH/N <sup>2</sup>
Weight of set	W	6850	g



Circuit Type	Calculated Output Power				Unit W
	Switching Frequency				
	20KHz	50KHz	100KHz	250KHz	
Push-pull converter	155000	251900	348900	678200	
Flyback converter	51600	83900	116300	226000	
Forward converter	77500	125900	174400	339100	