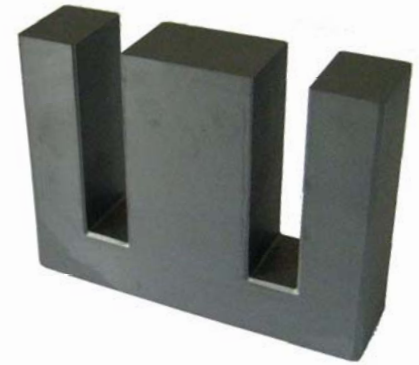
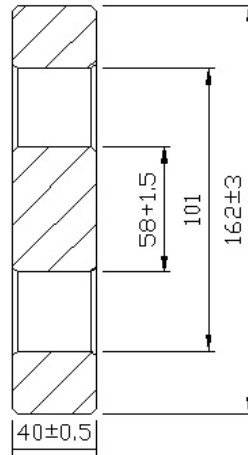
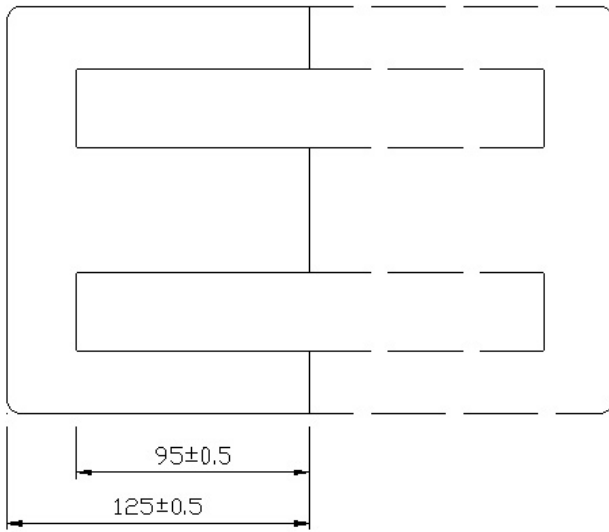
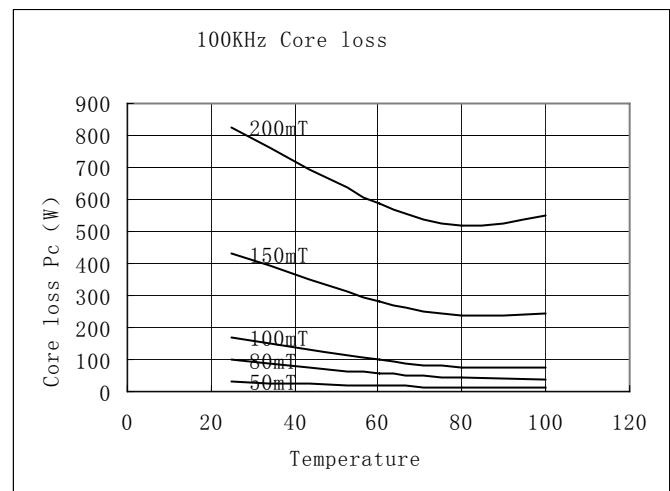
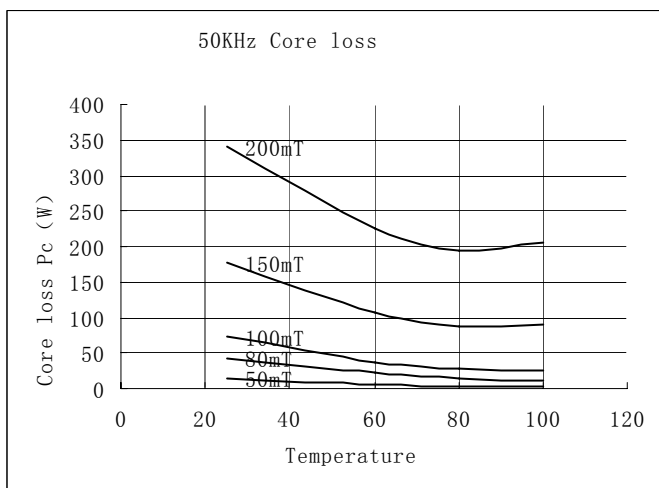


# EE160C



Parameter	Symbol	Value	Unit
Core constant	C1	0.212	mm <sup>-1</sup>
Effective path length	Le	511	mm
Effective area	Ae	2400	mm <sup>2</sup>
Effective volume	Ve	1308400	mm <sup>3</sup>
Inductance factor	AL	12000	nH/N <sup>2</sup>
Weight of set	W	6250	g



Circuit Type	Calculated Output Power				Unit W
	Switching Frequency				
	20KHz	50KHz	100KHz	250KHz	
Push-pull converter	63400	103100	142800	277700	
Flyback converter	21100	34300	47600	92500	
Forward converter	31700	51500	71400	138800	