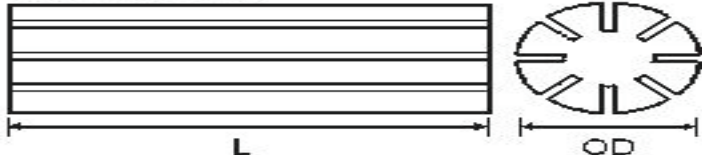


# IMPEDER CORE - ZRF



OD			Length			No of Slots	Type of Construction
3	±	0.3	200	±	1.0	6	One piece
4	±	0.3	200	±	1.0	6	One piece
5	±	0.3	200	±	1.0	6	One piece
6	±	0.3	200	±	1.0	6	One piece
6.5	±	0.7	200	±	1.0	6	One piece
7	±	0.3	200	±	1.0	6	One piece
7.5	±	0.3	200	±	1.0	6	One piece
8	±	0.3	200	±	1.0	6	One piece
8.5	±	0.3	200	±	1.0	6	One piece
9	±	0.3	200	±	1.0	6	One piece
10	±	0.4	200	±	1.0	6	One piece
11	±	0.4	200	±	1.0	8	One piece
12	±	0.4	200	±	1.0	8	One piece
12.7	±	0.4	200	±	1.0	8	One piece
13	±	0.4	200	±	1.0	8	One piece
14	±	0.4	200	±	1.0	8	One piece
15	±	0.5	200	±	1.0	8	One piece
16	±	0.5	200	±	1.0	8	One piece
17	±	0.6	200	±	1.0	8	One piece
18	±	0.6	200	±	1.0	8	One piece
19	±	0.6	200	±	1.0	8	One piece
20	±	0.6	200	±	1.0	8	One piece
21	±	0.6	200	±	1.0	8	One piece
22	±	0.65	200	±	1.0	8	One piece
23	±	0.65	200	±	1.0	8	8 piece joined
24	±	0.65	200	±	1.0	8	8 piece joined
25	±	0.65	200	±	1.0	8	8 piece joined
26	±	0.7	200	±	1.0	8	8 piece joined
27	±	0.7	200	±	1.0	8	8 piece joined
28	±	0.8	200	±	1.0	8	8 piece joined
29	±	0.8	200	±	1.0	8	8 piece joined
30	±	1.0	200	±	1.0	8	8 piece joined
32	±	1.0	200	±	1.0	8	8 piece joined



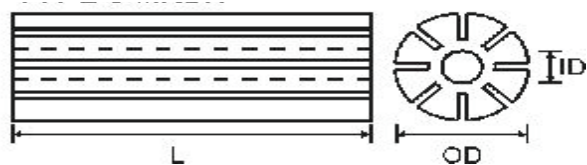
**Prodin Ferrite S.L.**

CalleA, 27, 08620 Sant Vicenç dels Horts, Barcelona (Spain)

Tel.: +34 93 672 46 10

[info@prodinferrite.com](mailto:info@prodinferrite.com) [www.prodinferrite.com](http://www.prodinferrite.com)

# IMPEDER CORE CON AGUJERO - ZRHC



OD			ID			Length			No of Slots	Type of construction
6	±	0.3	2	±	0.3	200	±	1	6	One piece
6	±	0.3	3	±	0.3	200	±	1	6	One piece
7	±	0.3	2	±	0.3	200	±	1	6	One piece
7	±	0.3	3	±	0.3	200	±	1	6	One piece
7	±	0.3	4	±	0.3	200	±	1	6	One piece
8	±	0.3	2	±	0.3	200	±	1	6	One piece
8	±	0.3	3	±	0.3	200	±	1	6	One piece
8	±	0.3	4	±	0.3	200	±	1	6	One piece
9	±	0.4	2	±	0.3	200	±	1	6	One piece
9	±	0.4	3	±	0.3	200	±	1	6	One piece
9	±	0.4	4	±	0.3	200	±	1	6	One piece
9	±	0.4	5	±	0.3	200	±	1	6	One piece
10	±	0.4	3	±	0.3	200	±	1	8	One piece
10	±	0.4	4	±	0.3	200	±	1	8	One piece
10	±	0.4	5	±	0.3	200	±	1	8	One piece
10	±	0.4	6	±	0.3	200	±	1	8	One piece
11	±	0.4	3	±	0.3	200	±	1	8	One piece
11	±	0.4	4	±	0.3	200	±	1	8	One piece
11	±	0.4	5	±	0.3	200	±	1	8	One piece
12	±	0.4	2	±	0.3	200	±	1	8	One piece
12	±	0.4	3	±	0.3	200	±	1	8	One piece
12	±	0.4	5	±	0.3	200	±	1	8	One piece
12	±	0.4	6	±	0.3	200	±	1	8	One piece
12	±	0.4	7	±	0.4	200	±	1	8	One piece
13	±	0.4	2	±	0.3	200	±	1	8	One piece
13	±	0.4	3	±	0.3	200	±	1	8	One piece
13	±	0.4	4	±	0.3	200	±	1	8	One piece
13	±	0.4	5	±	0.3	200	±	1	8	One piece
13	±	0.4	6	±	0.3	200	±	1	8	One piece
13	±	0.4	7	±	0.4	200	±	1	8	One piece
14	±	0.4	3	±	0.3	200	±	1	8	One piece
14	±	0.4	4	±	0.3	200	±	1	8	One piece
14	±	0.4	5	±	0.3	200	±	1	8	One piece
14	±	0.4	6	±	0.3	200	±	1	8	One piece
14	±	0.4	7	±	0.4	200	±	1	8	One piece
15	±	0.5	3	±	0.3	200	±	1	8	One piece
15	±	0.5	4	±	0.3	200	±	1	8	One piece
15	±	0.5	5	±	0.3	200	±	1	8	One piece
15	±	0.5	6	±	0.3	200	±	1	8	One piece
15	±	0.5	7	±	0.4	200	±	1	8	One piece
15	±	0.5	9	±	0.4	200	±	1	8	One piece



**Prodin Ferrite S.L.**

CalleA, 27, 08620 Sant Vicenç dels Horts, Barcelona (Spain)

Tel.: +34 93 672 46 10

[info@prodinferrite.com](mailto:info@prodinferrite.com) [www.prodinferrite.com](http://www.prodinferrite.com)

OD			ID			Length			No of Slots	Type of construction
16	±	0.5	3	±	0.3	200	±	1	8	One piece
16	±	0.5	4	±	0.3	200	±	1	8	One piece
16	±	0.5	5	±	0.3	200	±	1	8	One piece
16	±	0.5	5	±	0.3	200	±	1	8	One piece
16	±	0.5	6	±	0.4	200	±	1	8	One piece
16	±	0.5	7	±	0.4	200	±	1	8	One piece
16	±	0.5	8	±	0.4	200	±	1	8	One piece
17	±	0.6	3	±	0.3	200	±	1	8	One piece
17	±	0.6	4	±	0.3	200	±	1	8	One piece
17	±	0.6	5	±	0.3	200	±	1	8	One piece
17	±	0.6	7	±	0.4	200	±	1	8	One piece
17	±	0.6	8	±	0.4	200	±	1	8	One piece
18	±	0.6	3	±	0.3	200	±	1	8	One piece
18	±	0.6	5	±	0.3	200	±	1	8	One piece
18	±	0.6	6	±	0.3	200	±	1	8	One piece
18	±	0.6	8	±	0.4	200	±	1	8	One piece
18	±	0.6	9	±	0.4	200	±	1	8	One piece
19	±	0.6	3	±	0.3	200	±	1	8	One piece
19	±	0.6	6	±	0.3	200	±	1	8	One piece
19	±	0.6	8	±	0.4	200	±	1	8	One piece
19	±	0.6	9	±	0.4	200	±	1	8	One piece
19	±	0.6	11	±	0.4	200	±	1	8	One piece
20	±	0.6	3	±	0.3	200	±	1	8	One piece
20	±	0.6	6	±	0.3	200	±	1	8	One piece
20	±	0.6	10	±	0.4	200	±	1	8	One piece
20	±	0.6	11	±	0.4	200	±	1	8	One piece
21	±	0.6	3	±	0.3	200	±	1	8	One piece
21	±	0.6	4	±	0.3	200	±	1	8	One piece
21	±	0.6	6	±	0.3	200	±	1	8	One piece
21	±	0.6	10	±	0.4	200	±	1	8	One piece
22	±	0.7	3	±	0.3	200	±	1	8	One piece
22	±	0.7	6	±	0.3	200	±	1	8	One piece
22	±	0.7	8	±	0.4	200	±	1	8	One piece
22	±	0.7	9	±	0.4	200	±	1	8	One piece
22	±	0.7	14	±	0.5	200	±	1	8	One piece
23	±	0.7	2	±	0.2	200	±	1	8	One piece
18.5	±	0.6	11	±	0.4	200	±	1	8	8 piece joined
20	±	0.6	3	±	0.3	200	±	1	8	8 piece joined
20	±	0.5	6	±	0.3	200	±	1	8	8 piece joined
21	±	0.6	3	±	0.3	200	±	1	8	8 piece joined
21	±	0.6	10	±	0.4	200	±	1	8	8 piece joined
21	±	0.6	10.5	±	0.4	200	±	1	8	8 piece joined
21	±	0.5	13	±	0.5	200	±	1	8	8 piece joined
21	±	0.5	14	±	0.5	200	±	1	8	8 piece joined
22	±	0.65	3	±	0.3	200	±	1	8	8 piece joined
22	±	0.65	6	±	0.3	200	±	0.5	8	8 piece joined
22	±	0.65	10	±	0.4	200	±	1	8	8 piece joined
22	±	0.65	11	±	0.4	200	±	1	8	8 piece joined
22	±	0.7	14	±	0.5	200	±	1	8	8 piece joined



## Prodin Ferrite S.L.

CalleA, 27, 08620 Sant Vicenç dels Horts, Barcelona (Spain)

Tel.: +34 93 672 46 10

[info@prodinferrite.com](mailto:info@prodinferrite.com) [www.prodinferrite.com](http://www.prodinferrite.com)

OD			ID			Length			No of Slots	Type of construction
23	±	0.7	3	±	0.3	200	±	1	8	8 piece joined
23	±	0.5	6	±	0.3	200	±	1	8	8 piece joined
23	±	0.7	11	±	0.4	200	±	1	8	8 piece joined
23	±	0.7	11.5	±	0.4	200	±	1	8	8 piece joined
23	±	0.5	13	±	0.5	200	±	1	8	8 piece joined
24	±	0.7	3	±	0.3	200	±	1	8	8 piece joined
24	±	0.7	6	±	0.3	200	±	1	8	8 piece joined
24	±	0.7	8	±	0.4	200	±	1	8	8 piece joined
24	±	0.7	10	±	0.4	200	±	1	8	8 piece joined
24	±	0.7	12	±	0.5	200	±	1	8	8 piece joined
24	±	0.7	13	±	0.5	200	±	1	8	8 piece joined
25	±	0.7	3	±	0.3	200	±	1	8	8 piece joined
25	±	0.7	6	±	0.3	200	±	1	8	8 piece joined
25	±	0.7	10	±	0.4	200	±	1	8	8 piece joined
25	±	0.7	12	±	0.5	200	±	1	8	8 piece joined
26	±	0.7	3	±	0.3	200	±	1	8	8 piece joined
26	±	0.7	6	±	0.3	200	±	1	8	8 piece joined
26	±	0.7	13	±	0.5	200	±	1	8	8 piece joined
26	±	0.7	16	±	0.5	200	±	1	8	8 piece joined
27	±	0.7	3	±	0.3	200	±	1	8	8 piece joined
27	±	0.7	6	±	0.3	200	±	1	8	8 piece joined
27	±	0.5	8	±	0.4	200	±	1	8	8 piece joined
27	±	0.7	11	±	0.4	200	±	1	8	8 piece joined
27	±	0.7	13	±	0.5	200	±	1	8	8 piece joined
27	±	0.7	14	±	0.5	200	±	1	8	8 piece joined
28	±	0.8	6	±	0.3	200	±	1	8	8 piece joined
28	±	0.8	10	±	0.4	200	±	1	8	8 piece joined
28	±	0.8	14	±	0.5	200	±	1	8	8 piece joined
29	±	0.8	6	±	0.3	200	±	1	8	8 piece joined
29	±	0.8	10	±	0.4	200	±	1	8	8 piece joined
29	±	0.8	14	±	0.5	200	±	1	8	8 piece joined
30	±	0.8	3	±	0.3	200	±	1	8	8 piece joined
30	±	0.8	6	±	0.3	200	±	1	8	8 piece joined
30	±	0.8	10	±	0.4	200	±	1	8	8 piece joined
30	±	0.8	12	±	0.5	200	±	0.5	8	8 piece joined
30	±	0.8	14	±	0.5	200	±	1	8	8 piece joined
30	±	0.8	15	±	0.5	200	±	1	8	8 piece joined
31	±	0.8	3	±	0.3	200	±	1	8	8 piece joined
31	±	0.8	6	±	0.3	200	±	1	8	8 piece joined
31	±	0.8	10	±	0.4	200	±	1	8	8 piece joined
32	±	0.8	6	±	0.3	200	±	1	8	8 piece joined
32	±	0.8	10	±	0.4	200	±	1	8	8 piece joined
32	±	0.8	12	±	0.5	200	±	1	8	8 piece joined
32	±	0.8	16	±	0.5	200	±	1	8	8 piece joined
33	±	0.8	6	±	0.3	200	±	1	8	8 piece joined
33	±	0.8	10	±	0.4	200	±	1	8	8 piece joined
33	±	0.8	14	±	0.5	200	±	1	8	8 piece joined
33	±	0.8	15	±	0.5	200	±	1	8	8 piece joined



**Prodin Ferrite S.L.**

CalleA, 27, 08620 Sant Vicenç dels Horts, Barcelona (Spain)

Tel.: +34 93 672 46 10

[info@prodinferrite.com](mailto:info@prodinferrite.com) [www.prodinferrite.com](http://www.prodinferrite.com)

OD			ID			Length			No of Slots	Type of construction
34	±	0.8	6	±	0.3	200	±	1	8	8 piece joined
34	±	0.8	12	±	0.5	200	±	1	8	8 piece joined
34	±	0.8	17	±	0.5	200	±	1	8	8 piece joined
34	±	0.8	20	±	0.6	200	±	1	8	8 piece joined
35	±	0.8	6	±	0.3	200	±	1	8	8 piece joined
35	±	0.8	15	±	0.5	200	±	0.5	8	8 piece joined
35	±	0.8	17	±	0.5	200	±	1	8	8 piece joined
36	±	0.8	3	±	0.3	200	±	1	8	8 piece joined
36	±	0.8	6	±	0.3	200	±	1	8	8 piece joined
36	±	0.8	18	±	0.5	200	±	1	8	8 piece joined
37	±	0.8	3	±	0.3	200	±	1	8	8 piece joined
37	±	0.8	15	±	0.5	200	±	1	8	8 piece joined
37	±	0.8	18	±	0.5	200	±	1	8	8 piece joined
38	±	0.8	6	±	0.3	200	±	1	8	8 piece joined
38	±	0.8	12	±	0.5	200	±	1	8	8 piece joined
38	±	0.8	19	±	0.5	200	±	1	8	8 piece joined
39	±	0.8	6	±	0.3	200	±	1	8	8 piece joined
39	±	0.8	12	±	0.5	200	±	1	8	8 piece joined
39	±	0.8	19	±	0.5	200	±	1	8	8 piece joined
39	±	0.8	20	±	0.6	200	±	1	8	8 piece joined
40	±	0.8	6	±	0.3	200	±	1	8	8 piece joined
40	±	0.8	12	±	0.5	200	±	1	8	8 piece joined
40	±	1.2	20	±	0.6	200	±	1	8	8 piece joined
42	±	1.2	6	±	0.3	200	±	1	8	8 piece joined
42	±	0.8	18	±	0.5	200	±	1	8	8 piece joined
42	±	1.2	20	±	0.6	200	±	0.5	8	8 piece joined
42	±	1.2	21	±	0.8	200	±	1	8	8 piece joined
43	±	1.2	22	±	0.8	200	±	1	8	8 piece joined
44	±	1.2	6	±	0.3	200	±	1	8	8 piece joined
44	±	1.2	22	±	0.8	200	±	1	8	8 piece joined
45	±	1.2	20	±	0.6	200	±	3	8	8 piece joined
46	±	1.2	18	±	0.5	200	±	1	8	8 piece joined
46	±	1.2	23	±	0.8	200	±	1	8	8 piece joined
48	±	1.2	20	±	0.6	200	±	1	8	8 piece joined
48	±	1.2	24	±	0.8	200	±	1	8	8 piece joined
50	±	1.2	25	±	0.8	200	±	1	8	8 piece joined
51	±	1.2	26	±	0.8	200	±	1	8	8 piece joined
54	±	1.2	6	±	0.3	200	±	1	8	8 piece joined
55	±	1.2	6	±	0.3	200	±	1	8	8 piece joined
55	±	1.2	20	±	0.6	200	±	0.5	8	8 piece joined
55	±	1.2	25	±	0.8	200	±	1	8	8 piece joined
55	±	1.2	27	±	0.8	200	±	1	8	8 piece joined
56	±	1.2	28	±	0.8	200	±	1	8	8 piece joined
57	±	1.2	29	±	0.8	200	±	1	8	8 piece joined
58	±	1.2	29	±	0.8	200	±	1	8	8 piece joined
60	±	1.2	30	±	0.8	200	±	1	8	8 piece joined
62	±	1.2	31	±	0.8	200	±	1	8	8 piece joined
65	±	1.2	32	±	0.8	200	±	1	8	8 piece joined
70	±	1.2	35	±	0.8	200	±	1	8	8 piece joined



## Prodin Ferrite S.L.

CalleA, 27, 08620 Sant Vicenç dels Horts, Barcelona (Spain)

Tel.: +34 93 672 46 10

[info@prodinferrite.com](mailto:info@prodinferrite.com) [www.prodinferrite.com](http://www.prodinferrite.com)

OD			ID			Length			No of Slots	Type of construction
73	±	1.2	36	±	1.0	200	±	1	8	8 piece joined
75	±	1.2	35	±	0.8	200	±	1	8	8 piece joined
80	±	1.2	40	±	1.0	200	±	1	8	8 piece joined
85	±	1.2	42	±	1.0	200	±	1	8	8 piece joined
85	±	1.2	42	±	1.0	200	±	1	8	8 piece joined
90	±	1.2	45	±	1.0	200	±	1	8	8 piece joined
95	±	1.2	48	±	1.0	200	±	1	8	8 piece joined
100	±	1.2	50	±	1.0	200	±	1	8	8 piece joined
102	±	1.2	52	±	1.0	200	±	1	8	8 piece joined



## Prodin Ferrite S.L.

CalleA, 27, 08620 Sant Vicenç dels Horts, Barcelona (Spain)

Tel.: +34 93 672 46 10

[info@prodiferrite.com](mailto:info@prodiferrite.com) [www.prodiferrite.com](http://www.prodiferrite.com)