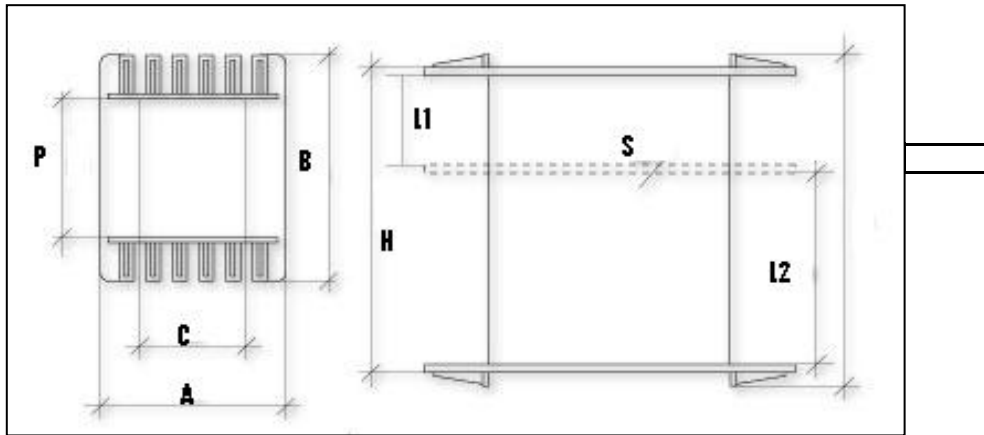


MODELOS: UI-60 Y UI-66



UI-60 (CIRCUITO 100X100)

Tolerancia: ± 0.2

MOD	REF	C	P	A	B	H	K	L1	L2	S	RANURAS
20X20X60 PH	220001	20,8	21,0	39,0	44	59,0					
20X20X60 PH	220003	20,8	21,0	39,0	44	59,0		27,5	27,5	1,5	
20X30X60 PH	230038	20,8	30,8	39,0	53	59,0					4 + 4
20X40X55 PH		20,8	40,0	39,0	53	59,0		27,5	27,5	1,5	4 + 4
20x50x60 PH		20,8	50,0	39,0	73	59,0					

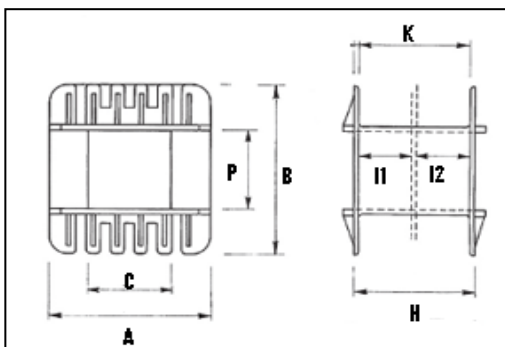
UI-66 (CIRCUITO 112X132)

Tolerancia: ± 0.2

MOD	REF	C	P	A	B	H	K	L1	L2	S	RANURAS
22x30x66 PH	220010	23,8	30,0	52,0	63,0	65,7				1,6	
22X40X66 PH	220011	23,8	40,0	52,0	68,0	65,7				1,6	
22X45X66 PH	220012	23,8	45,0	52,0	78,0	65,7				1,6	
22X50X66 PH		23,8	50,0	52,0	88,0	65,7				1,6	

MODELO: UI-68 (CIRCUITO 110X120)

Tolerancia: ± 0.2



MOD	REF	C	P	A	B	H	K	L1	L2	S	RANURAS
22X40X68 PH		23,8	40,0	42,0	66,2	66,2	62,5				



Prodin Ferrite S.L.

CalleA, 27, 08620 Sant Vicenç dels Horts, Barcelona (Spain)

Tel.: +34 93 672 46 10

info@prodinferrite.com www.prodinferrite.com