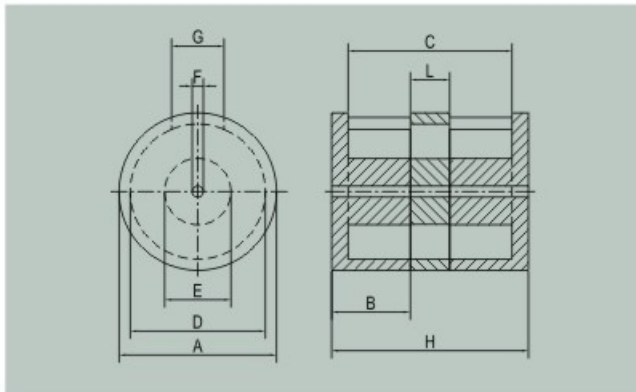
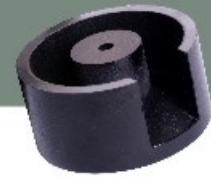


70mm/Pot Cores



PC 70 x 50 - NF 26

Pot-Core

A尺寸 (mm)

B尺寸 (mm): Letter Indicates Alternate Height

Material No.

Physical Specifications

Dimensions(mm)	A	B	C	D	E	F	G	H	L
Part No.	± 0.5	± 0.5	± 0.5	± 0.5	± 0.5	± 0.5	± 0.5	± 0.5	± 0.5
PC70 × 27.5 (PC70-H55)	70	27.5	34	61	35	8.5	20	55	/
PC70 × 30 (PC70-H60)	70	30	39	61	35	8.5	20	60	/
PC70 × 32.5 (PC70-H65)	70	32.5	44	61	35	8.5	20	65	/
PC70 × 35 (PC70-H70)	70	35	49	61	35	8.5	20	70	/
PC70 × 37.5 (PC70-H75)	70	37.5	54	61	35	8.5	20	75	/
PC70 × 40 (PC70-H80)	70	40	59	61	35	8.5	20	80	/
PC70 × 42.5 (PC70-H85)	70	42.5	64	61	35	8.5	20	85	/
PC70 × 45 (PC70-H90)	70	45	69	61	35	8.5	20	90	/
PC70 × 47.5 (PC70-H95)	70	47.5	74	61	35	8.5	20	95	/
PC70 × 50 (PC70-H100)	70	50	79	61	35	8.5	20	100	/
PC70 × 52.5 (PC70-H105)	70	52.5	84	61	35	8.5	20	105	/
PC70 × 55 (PC70-H110)	70	55	89	61	35	8.5	20	110	/



Prodin Ferrite S.L.

CalleA, 27, 08620 Sant Vicenç dels Horts, Barcelona (Spain)

Tel.: +34 93 672 46 10

info@prodin ferrite.com www.prodin ferrite.com



70mm/Pot Cores

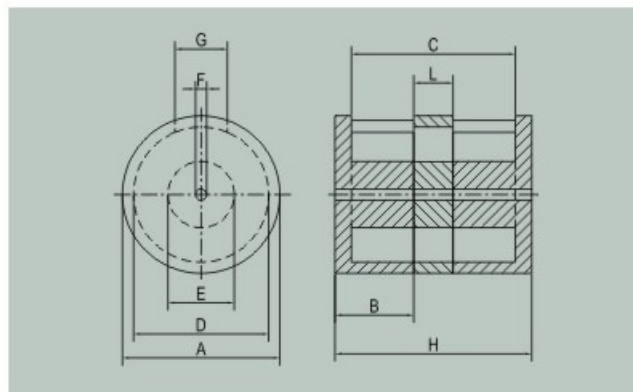
PC 70 H100-NF 26

Material No.

H尺寸 (mm): Letter Indicates Alternate Height

A尺寸 (mm)

Pot-Core



Electromagnetic Properties

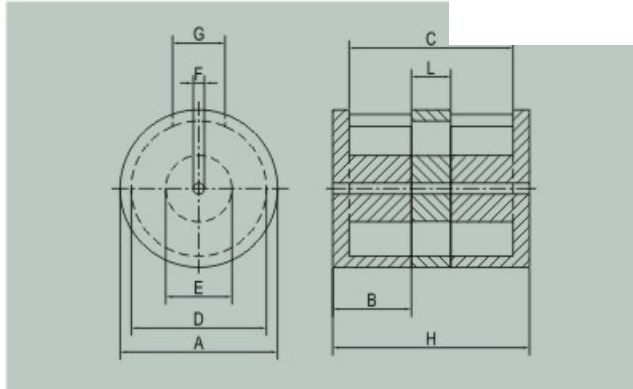
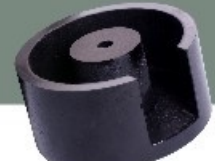
Part No.	l_0 cm	A_0 cm ²	V cm ³	W cm ²	A_L (nH/N ²) $\pm 15\%$			
					NF26	NF35	NF60	NF75
PC70-H55 (PC70 × 27.5)	13.28	9.53	126.51	9.18	254	362	412	536
PC70-H60 (PC70 × 30)	14.25	9.44	134.47	10.53	245	312	356	462
PC70-H65 (PC70 × 32.5)	15.22	9.37	142.56	11.88	217	277	316	410
PC70-H70 (PC70 × 35)	16.19	9.32	150.84	13.23	195	248	283	367
PC70-H75 (PC70 × 37.5)	17.16	9.27	159.03	14.58	177	225	257	334
PC70-H80 (PC70 × 40)	18.13	9.24	167.48	15.93	164	207	236	306
PC70-H85 (PC70 × 42.5)	19.10	9.21	175.85	17.28	151	190	217	285
PC70-H90 (PC70 × 45)	20.07	9.18	184.20	18.63	143	178	203	263
PC70-H95 (PC70 × 47.5)	21.04	9.16	192.68	19.98	133	168	191	248
PC70-H100 (PC70 × 50)	22.01	9.14	201.13	21.33	125	157	179	233
PC70-H105 (PC70 × 52.5)	22.98	9.12	209.53	22.68	118	149	170	220
PC70-H110 (PC70 × 55)	23.95	9.11	218.14	24.03	112	141	160	208

A_L 值是由2个或2个以上磁芯部分测得
We get A_L value from test result of two or more cores

高度120mm以下是由2个磁芯组合而成
The Pot Core which height less than 120mm is assembled by two Pot Cores

H高度120mm以上则由2个磁芯再加上中间一个或一个以上的磁圈和R棒组合而成
The Pot Core which higher than 120mm is assembled by two parts: two Pot Cores, one or more magnetic loop-rod in the middle of the Pot Core

100mm/Pot Cores



PC 100 x 50 - NF 26
 Pot-Core
 A尺寸 (mm)
 B尺寸 (mm): Letter Indicates Alternate Height
 Material No.

Physical Specifications

Dimensions(mm)	A	B	C	D	E	F	G	H	L
Part No.	± 0.5	± 0.5	± 0.5	± 0.5	± 0.5	± 0.5	± 0.5	± 0.5	± 0.5
PC100X25 (PC100-H50)	100.	25	29.5	87	40.5	8.5	35	50	/
PC100X30 (PC100-H60)	100	30	39.5	87	40.5	8.5	35	60	/
PC100X35 (PC100-H70)	100	35	49.5	87	40.5	8.5	35	70	/
PC100X40 (PC100-H80)	100	40	59.5	87	40.5	8.5	35	80	/
PC100X45 (PC100-H90)	100	45	69.5	87	40.5	8.5	35	90	/
PC100X50 (PC100-H100)	100	50	79.5	87	40.5	8.5	35	100	/
PC100-H110	100	40	89.5	87	40.5	8.5	35	110	30
PC100-H120	100	40	99.5	87	40.5	8.5	35	120	40
PC100-H130	100	50	109.5	87	40.5	8.5	35	130	30
PC100-H140	100	50	119.5	87	40.5	8.5	35	140	40
PC100-H150	100	50	129.5	87	40.5	8.5	35	150	50
PC100-H160	100	50	139.5	87	40.5	8.5	35	160	60



Prodin Ferrite S.L.

CalleA, 27, 08620 Sant Vicenç dels Horts, Barcelona (Spain)

Tel.: +34 93 672 46 10

info@prodinferrite.com www.prodinferrite.com



100mm/Pot Cores

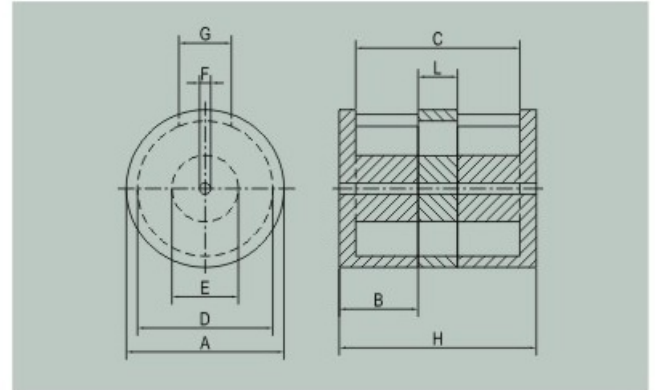
PC 100 - H120 - NF 26

Material No.

H尺寸 (mm): Letter Indicates Alternate Height

A尺寸 (mm)

Pot-Core



Electromagnetic Properties

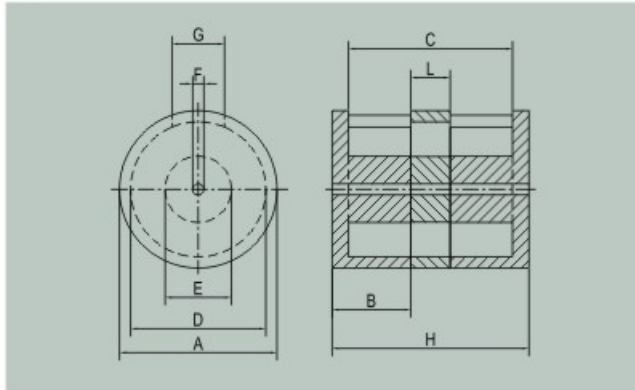
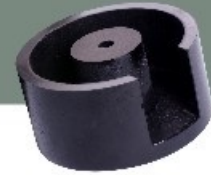
Part No.	l_0 cm	A_0 cm ²	V cm ³	W cm ²	A_L (nH/N ²) ± 15%			
					NF26	NF35	NF60	NF75
PC100-H50 (PC100X25)	12.92	15.25	197.00	6.90	352	460	525	683
PC100-H60 (PC100X30)	14.87	15.08	224.30	9.20	338	397	453	589
PC100-H70 (PC100X35)	16.82	14.96	251.60	11.50	300	352	402	523
PC100-H80 (PC100X40)	18.78	14.86	279.10	13.80	270	316	360	468
PC100-H90 (PC100X45)	20.74	14.79	306.60	16.10	245	287	327	425
PC100-H100 (PC100X50)	22.70	14.73	334.20	18.40	227	263	300	390
PC100-H110	24.65	14.68	361.80	20.70	209	242	276	363
PC100-H120	26.61	14.63	389.40	23.00	197	226	258	335
PC100-H130	28.57	14.60	417.00	25.30	184	213	243	316
PC100-H140	30.53	14.56	444.60	27.60	173	200	228	296
PC100-H150	32.49	14.54	472.30	29.90	163	189	216	281
PC100-H160	34.45	14.51	499.90	32.20	154	179	204	265

A_L 值是由2个或2个以上磁芯部分测得
We get A_L value from test result of two or more cores

高度120mm以下是由2个磁芯组合而成
The Pot Core which height less than 120mm is assembled by two Pot Cores

H高度120mm以上则由2个磁芯再加上中间一个或一个以上的磁圈和R棒组合而成
The Pot Core which higher than 120mm is assembled by two parts: two Pot Cores, one or more magnetic loop-rod in the middle of the Pot Core

120mm/Pot Cores



PC 120 x 60 - NF 26
 Pot-Core
 A尺寸 (mm)
 B尺寸 (mm): Letter Indicates Alternate Height
 Material No.

Physical Specifications

Dimensions(mm)	A	B	C	D	E	F	G	H	L
Part No.	± 0.5	± 0.5	± 0.5	± 0.5	± 0.5	± 0.5	± 0.5	± 0.5	± 0.5
PC120X30 (PC120-H60)	120	30	34.5	103	50.5	8.5	35	60	/
PC120X35 (PC120-H70)	120	35	44.5	103	50.5	8.5	35	70	/
PC120X40 (PC120-H80)	120	40	54.5	103	50.5	8.5	35	80	/
PC120X45 (PC120-H90)	120	45	64.5	103	50.5	8.5	35	90	/
PC120X50 (PC120-H100)	120	50	74.5	103	50.5	8.5	35	100	/
PC120X55 (PC120-H110)	120	55	84.5	103	50.5	8.5	35	110	/
PC120X60 (PC120-H120)	120	60	94.5	103	50.5	8.5	35	120	/
PC120-H130	120	50	104.5	103	50.5	8.5	35	130	30
PC120-H140	120	50	114.5	103	50.5	8.5	35	140	40
PC120-H150	120	60	124.5	103	50.5	8.5	35	150	30
PC120-H160	120	60	134.5	103	50.5	8.5	35	160	40
PC120-H170	120	60	144.5	103	50.5	8.5	35	170	50
PC120-H180	120	60	154.5	103	50.5	8.5	35	180	60



Prodin Ferrite S.L.

CalleA, 27, 08620 Sant Vicenç dels Horts, Barcelona (Spain)

Tel.: +34 93 672 46 10

info@prodinferrite.com www.prodinferrite.com



120mm/Pot Cores

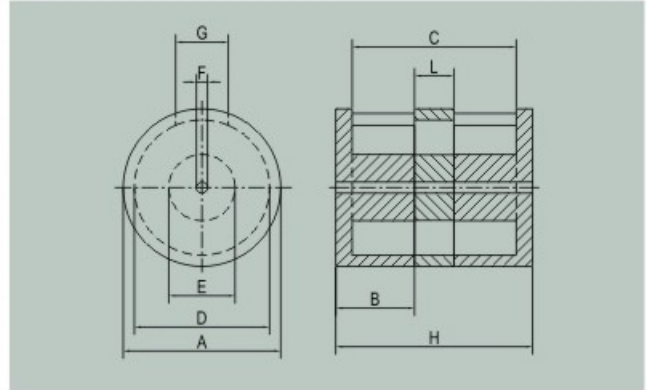
PC 120 -H150 - NF 26

Material No.

H尺寸 (mm): Letter Indicates Alternate Height

A尺寸 (mm)

Pot-Core



Electromagnetic Properties

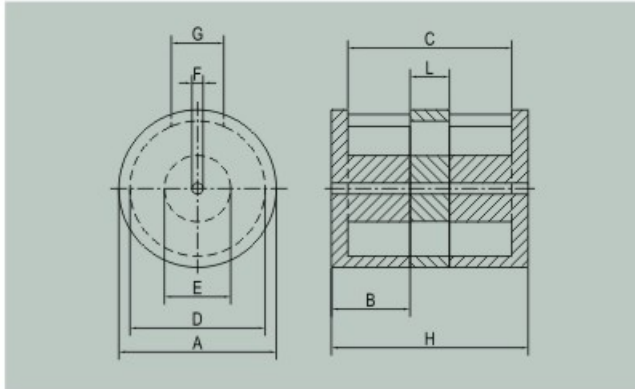
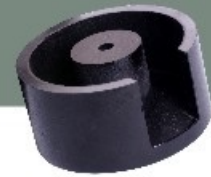
Part No.	l_e cm	A_e cm ²	V cm ³	W cm ²	A_L (nH/N ²) $\pm 15\%$			
					NF26	NF35	NF60	NF75
PC120-H60 (PC120X30)	15.29	23.72	362.60	9.10	488	609	651	756
PC120-H70 (PC120X35)	17.24	23.52	405.60	11.70	434	539	577	670
PC120-H80 (PC120X40)	19.20	23.37	448.70	14.30	389	484	517	600
PC120-H90 (PC120X45)	21.15	23.25	491.90	16.90	355	442	472	549
PC120-H100 (PC120X50)	23.11	23.16	535.20	19.50	327	404	432	501
PC120-H110 (PC120X55)	25.07	23.08	578.50	22.10	302	376	398	462
PC120-H120 (PC120X60)	27.03	23.01	621.90	24.70	282	348	372	432
PC120-H130	28.99	22.95	665.30	27.30	265	327	350	406
PC120-H140	30.95	22.90	708.70	29.90	251	306	327	380
PC120-H150	32.91	22.85	752.10	32.50	237	292	309	359
PC120-H160	34.87	22.81	795.50	35.10	226	275	294	341
PC120-H170	36.83	22.78	839.00	37.70	214	261	279	324
PC120-H180	38.79	22.75	882.50	40.30	206	251	268	311

A_L 值是由2个或2个以上磁芯部分测得
We get A_L value from test result of two or more cores

高度120mm以下是由2个磁芯组合而成
The Pot Core which height less than 120mm is assembled by two Pot Cores

H高度120mm以上则由2个磁芯再加上中间一个或一个以上的磁圈和R棒组合而成
The Pot Core which higher than 120mm is assembled by two parts: two Pot Cores, one or more magnetic loop-rod in the middle of the Pot Core

150mm/Pot Cores



PC 150 x 60 - NF 26

Pot-Core

A尺寸 (mm)

B尺寸 (mm): Letter Indicates Alternate Height

Material No.

Physical Specifications

Dimensions(mm)	A	B	C	D	E	F	G	H	L
Part No.	± 0.5	± 0.5	± 0.5	± 0.5	± 0.5	± 0.5	± 0.5	± 0.5	± 0.5
PC150X30 (PC150-H60)	150	30	29.5	133	72	10.5	50	60	/
PC150X35 (PC150-H70)	150	35	39.5	133	72	10.5	50	70	/
PC150X40 (PC150-H80)	150	40	49.5	133	72	10.5	50	80	/
PC150X45 (PC150-H90)	150	45	59.5	133	72	10.5	50	90	/
PC150X50 (PC150-H100)	150	50	69.5	133	72	10.5	50	100	/
PC150X55 (PC150-H110)	150	55	79.5	133	72	10.5	50	110	/
PC150X60 (PC150-H120)	150	60	89.5	133	72	10.5	50	120	/
PC150-H130	150	50	99.5	133	72	10.5	50	130	30
PC150-H140	150	50	109.5	133	72	10.5	50	140	40
PC150-H150	150	60	119.5	133	72	10.5	50	150	30
PC150-H160	150	60	129.5	133	72	10.5	50	160	40
PC150-H170	150	60	139.5	133	72	10.5	50	170	50
PC150-H180	150	60	149.5	133	72	10.5	50	180	60



Prodin Ferrite S.L.

CalleA, 27, 08620 Sant Vicenç dels Horts, Barcelona (Spain)

Tel.: +34 93 672 46 10

info@prodinferrite.com www.prodinferrite.com



150mm/Pot Cores

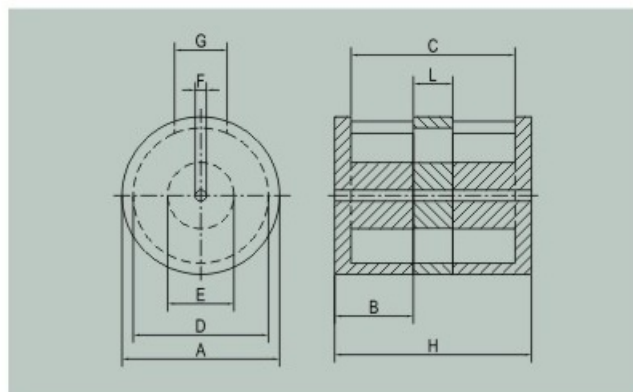
PC 150 -H150 - NF 26

Material No.

H尺寸 (mm): Letter Indicates Alternate Height

A尺寸 (mm)

Pot-Core



Electromagnetic Properties

Part No.	l_e cm	A_e cm ²	V cm ³	W cm ²	A_L (nH/N ²) ± 15%			
					NF26	NF35	NF60	NF75
PC150-H60 (PC150X30)	16.30	39.78	648.40	9.15	742	906	971	1127
PC150-H70 (PC150X35)	18.27	39.30	717.90	12.20	659	806	863	1102
PC150-H80 (PC150X40)	20.24	38.94	788.00	15.25	597	726	778	903
PC150-H90 (PC150X45)	22.21	38.65	858.30	18.30	544	663	710	824
PC150-H100 (PC150X50)	24.19	38.41	928.90	21.35	505	610	653	758
PC150-H110 (PC150X55)	26.16	38.21	999.70	24.40	470	567	608	705
PC150-H120 (PC150X60)	28.14	38.04	1070.60	27.45	439	530	568	659
PC150-H130	30.12	37.90	1141.70	30.50	413	498	534	619
PC150-H140	32.10	37.78	1212.80	33.55	391	466	506	587
PC150-H150	34.08	37.67	1283.90	36.60	369	445	477	554
PC150-H160	36.06	37.58	1355.20	39.65	351	424	454	527
PC150-H170	38.05	37.49	1426.40	42.70	334	403	432	501
PC150-H180	40.03	37.42	1497.80	45.75	325	387	415	481

A_L 值是由2个或2个以上磁芯部分测得

We get A_L value from test result of two or more cores

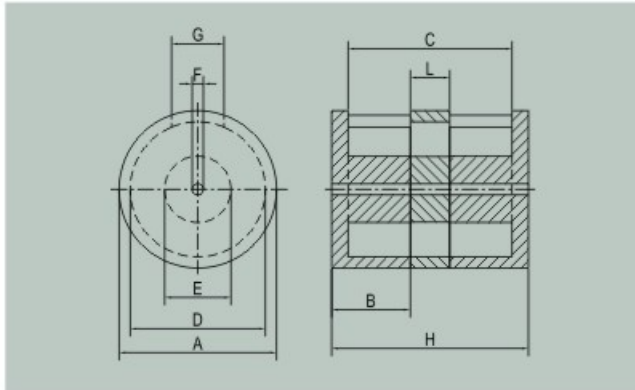
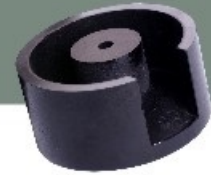
高度120mm以下是由2个磁芯组合而成

The Pot Core which height less than 120mm is assembled by two Pot Cores

H高度120mm以上则由2个磁芯再加上中间一个或一个以上的磁圈和R棒组合而成

The Pot Core which higher than 120mm is assembled by two parts: two Pot Cores, one or more magnetic loop-rod in the middle of the Pot Core

175mm/Pot Cores



PC 175 x 60 - NF 26

Pot-Core ———

A尺寸 (mm) ———

B尺寸 (mm): Letter Indicates Alternate Height ———

Material No. ———

Physical Specifications

Dimensions(mm)	A	B	C	D	E	F	G	H	L
Part No.	± 0.5	± 0.5	± 0.5	± 0.5	± 0.5	± 0.5	± 0.5	± 0.5	± 0.5
PC175-H60 (PC175X30)	175	30	25	155	72	12.5	60	60	/
PC175-H70 (PC175X35)	175	35	35	155	72	12.5	60	70	/
PC175-H80 (PC175X40)	175	40	45	155	72	12.5	60	80	/
PC175-H90 (PC175X45)	175	45	55	155	72	12.5	60	90	/
PC175-H100 (PC175X50)	175	50	65	155	72	12.5	60	100	/
PC175-H110 (PC175X55)	175	55	75	155	72	12.5	60	110	/
PC175-H120 (PC175X60)	175	60	85	155	72	12.5	60	120	/
PC175-H140	175	60	105	155	72	12.5	60	140	20
PC175-H160	175	60	125	155	72	12.5	60	160	40
PC175-H180	175	60	145	155	72	12.5	60	180	60
PC175-H200	175	60	165	155	72	12.5	60	200	80
PC175-H220	175	60	185	155	72	12.5	60	220	100
PC175-H240	175	60	205	155	72	12.5	60	240	120



Prodin Ferrite S.L.

CalleA, 27, 08620 Sant Vicenç dels Horts, Barcelona (Spain)

Tel.: +34 93 672 46 10

info@prodinferrite.com www.prodinferrite.com



175mm/Pot Cores

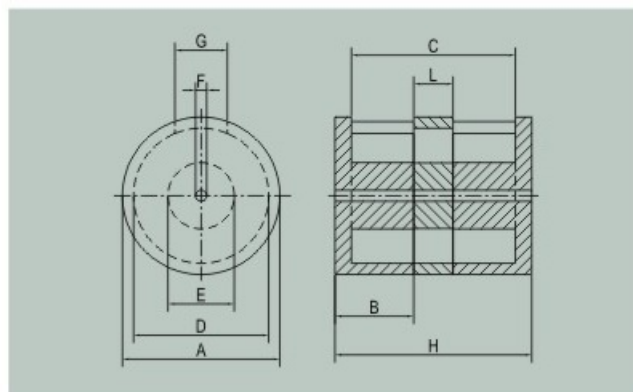
PC 175 -H150 - NF 26

Material No.

H尺寸 (mm): Letter Indicates Alternate Height

A尺寸 (mm)

Pot-Core



Electromagnetic Properties

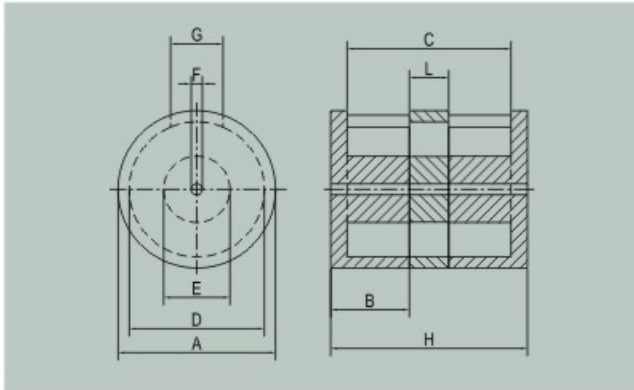
Part No.	l_e cm	A_e cm ²	V cm ³	W cm ²	A_L (nH/N ²) ± 15%			
					NF26	NF35	NF60	NF75
PC175-H60 (PC175X30)	17.46	47.71	833.1	10.38	792	989	1057	1216
PC175-H70 (PC175X35)	19.42	47.00	912.8	14.53	705	876	936	1077
PC175-H80 (PC175X40)	21.39	46.45	993.5	18.68	632	785	840	966
PC175-H90 (PC175X45)	23.36	46.30	1074.8	22.83	577	718	767	883
PC175-H100 (PC175X50)	25.33	45.66	1156.6	26.98	531	655	701	806
PC175-H110 (PC175X55)	27.31	45.36	1238.7	31.13	490	610	646	744
PC175-H120 (PC175X60)	29.29	45.11	1321.2	35.28	458	565	604	695
PC175-H140	33.25	44.71	1486.6	43.58	403	497	532	612
PC175-H160	37.21	44.41	1652.6	51.88	362	446	477	549
PC175-H180	41.18	44.17	1818.9	60.18	330	407	435	500
PC175-H200	45.15	43.97	1985.5	68.48	302	373	399	459
PC175-H220	49.13	43.81	2152.3	76.78	284	350	374	431
PC175-H240	53.10	43.68	2319.3	85.03	261	322	344	396

A_L 值是由2个或2个以上磁芯部分测得
We get A_L value from test result of two or more cores

高度120mm以下是由2个磁芯组合而成
The Pot Core which height less than 120mm is assembled by two Pot Cores

H高度120mm以上则由2个磁芯再加上中间一个或一个以上的磁圈和R棒组合而成
The Pot Core which higher than 120mm is assembled by two parts: two Pot Cores, one or more magnetic loop-rod in the middle of the Pot Core

200mm/Pot Cores



PC 200 x 60 - NF 26

Pot-Core ————

A尺寸 (mm) ————

B尺寸 (mm): Letter Indicates Alternate Height ————

Material No. ————

Physical Specifications

Dimensions(mm)	A	B	C	D	E	F	G	H	L
Part No.	± 0.5	± 0.5	± 0.5	± 0.5	± 0.5	± 0.5	± 0.5	± 0.5	± 0.5
PC200-H80 (PC200X40)	200	40	40	176	90	12.5	65	80	/
PC200-H90 (PC200X45)	200	45	50	176	90	12.5	65	90	/
PC200-H100 (PC200X50)	200	50	60	176	90	12.5	65	100	/
PC200-H110 (PC200X55)	200	55	70	176	90	12.5	65	110	/
PC200-H120 (PC200X60)	200	60	80	176	90	12.5	65	120	/
PC200-H140	200	60	100	176	90	12.5	65	140	20
PC200-H160	200	60	120	176	90	12.5	65	160	40
PC200-H180	200	60	140	176	90	12.5	65	180	60
PC200-H200	200	60	160	176	90	12.5	65	200	80
PC200-H220	200	60	180	176	90	12.5	65	220	100
PC200-H240	200	60	200	176	90	12.5	65	240	120
PC200-H290	200	60	220	176	90	12.5	65	260	140
PC200-H280	200	60	240	176	90	12.5	65	280	160



Prodin Ferrite S.L.

CalleA, 27, 08620 Sant Vicenç dels Horts, Barcelona (Spain)

Tel.: +34 93 672 46 10

info@prodin ferrite.com www.prodin ferrite.com



200mm/Pot Cores

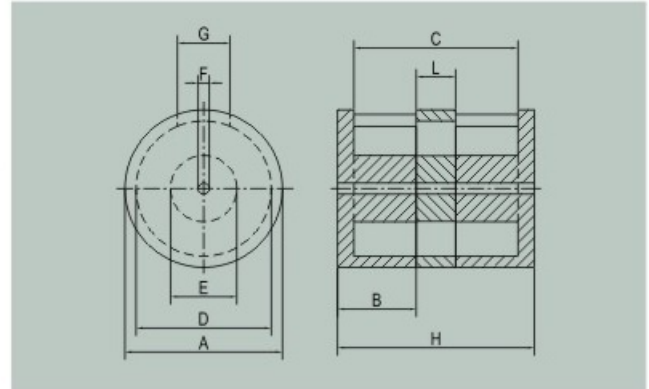
PC 200 -H150 - NF 26

Material No.

H尺寸 (mm): Letter Indicates Alternate Height

A尺寸 (mm)

Pot-Core



Electromagnetic Properties

Part No.	l _e cm	A _e cm ²	V cm ³	W cm ²	A _L (nH/N ²) ± 15%			
					NF26	NF35	NF60	NF75
PC200-H80 (PC200X40)	25.93	63.16	1637.74	17.20	766	949	1015	1168
PC200-H90 (PC200X45)	27.89	53.40	1740.28	21.50	699	867	927	1067
PC200-H100 (PC200X50)	29.85	61.82	1845.52	25.80	644	792	847	974
PC200-H110 (PC200X55)	31.81	61.37	1952.05	30.10	594	738	781	899
PC200-H120 (PC200X60)	33.78	60.98	2060.07	34.40	555	683	730	840
PC200-H140	37.74	60.67	2289.58	43.00	488	601	642	739
PC200-H160	41.67	60.40	2516.75	51.60	438	540	577	664
PC200-H180	45.62	60.18	2745.19	60.20	400	492	526	605
PC200-H200	49.57	60.00	2973.43	68.80	366	451	482	554
PC200-H220	53.52	59.80	3201.03	77.40	344	423	453	521
PC200-H240	57.48	59.66	3429.66	86.00	316	389	416	479
PC200-H260	61.44	59.52	3657.16	94.60	294	362	387	445
PC200-H280	65.41	59.41	3886.20	103.20	278	342	365	420

A_L 值是由2个或2个以上磁芯部分测得
We get A_L value from test result of two or more cores

高度120mm以下是由2个磁芯组合而成
The Pot Core which height less than 120mm is assembled by two Pot Cores

H高度120mm以上则由2个磁芯再加上中间一个或一个以上的磁圈和R棒组合而成
The Pot Core which higher than 120mm is assembled by two parts: two Pot Cores, one or more magnetic loop-rod in the middle of the Pot Core