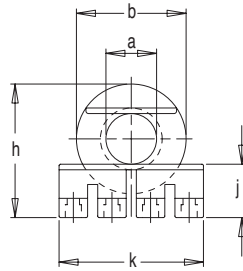


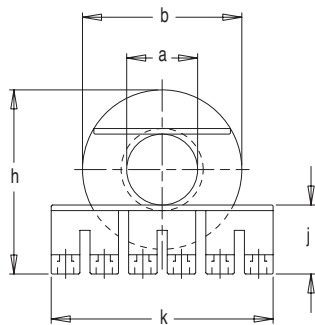
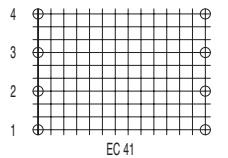
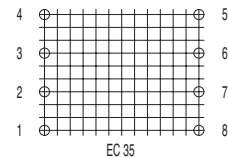
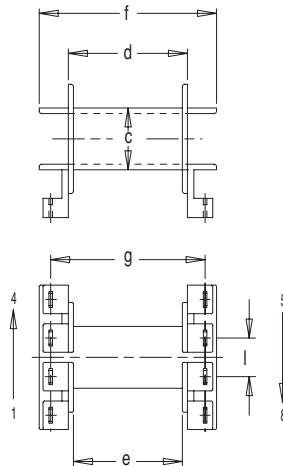


# EC Ferrite Core Coil Bobbins

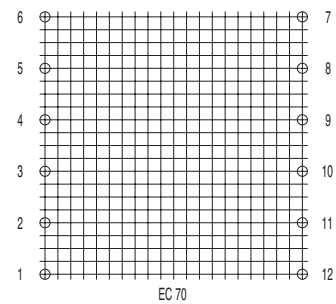
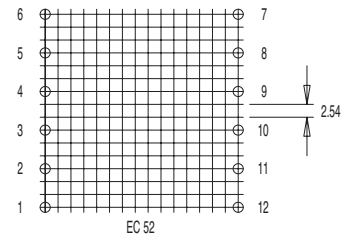
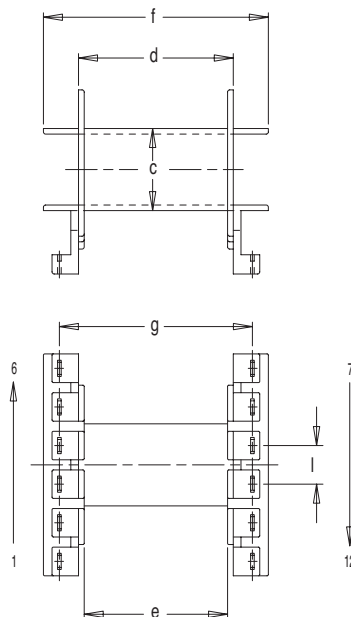
## SWITCH MODE LOW PROFILE



EC 35  
EC 41  
(8 Terminal bobbins)

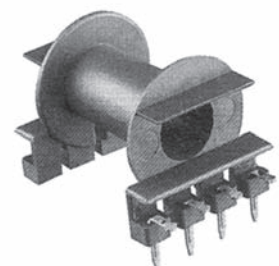


EC 52  
EC 70  
(12 Terminal bobbins)



For use with terminals TBS 902/3/6/8/9

Bobbin size	No. of terminals available	a	b	c	d	e	f	g	h	j	k	l	Part No.
EC 35 (MP23)	8 (2 x 4)	10.0	21.6	12.2	23.5	21.5	34.0	30.48	26.4	10.5	28.5	7.62	FC0011
EC 41 (MP33)	8 (2 x 4)	12.1	25.6	14.1	26.7	24.5	38.5	33.02	30.9	12.0	28.5	7.62	FC0021
EC 41 (MP33)	8 (2 x 4)	..	..	..	..	..	..	..	28.9	10.0	..	..	FC0022
EC 52 (MP43)	12 (2 x 6)	14.0	31.4	16.2	30.55	28.3	44.4	38.1	36.3	13.6	43.8	7.62	FC0031
EC 70 (MP53)	12 (2 x 6)	17.2	42.5	19.4	44.15	41.5	57.8	50.8	47.0	17.1	56.5	10.16	FC0041



Standard materials: Nylon 66 glass reinforced to UL94V0 Dimensions in millimetres



**Prodin Ferrite S.L.**

Calle A, 27, 08620 Sant Vicenç dels Horts, Barcelona (Spain)

Tel.: +34 93 672 46 10

[info@prodinferrite.com](mailto:info@prodinferrite.com) [www.prodinferrite.com](http://www.prodinferrite.com)