

Appearance & Shape: To be free from any defect such as flow, burrs, unevenness etc, As per IEC standards.

Effective Parameters irrespective of material grade (per set)

- Effective Length (L_e): 354.0mm
- Effective Area (A_e): 840.0mm²
- Effective Area (A_{Min}): 840.0mm²
- Effective Volume (V_e): 297000mm³

Approximate weight (without Gap): 1400g/Set



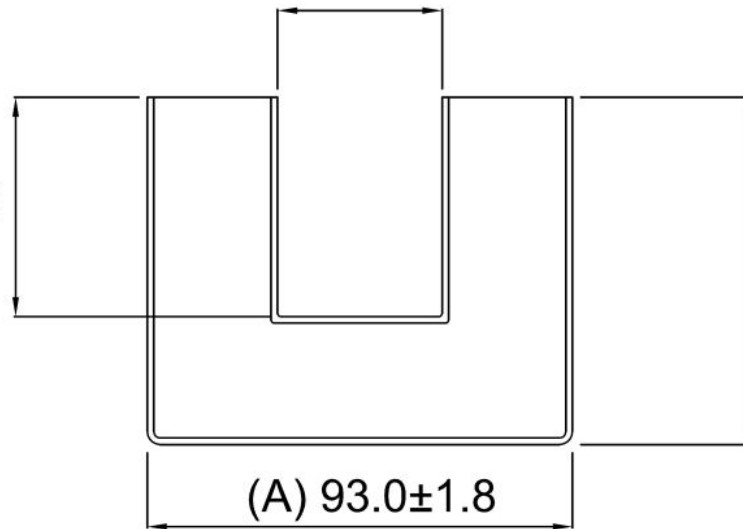
UU9330ST (OL)

Test Conditions: 1kHz/300mV/CFR COIL,N=100/25°C

Material Grade	Initial Permeability (μ_{iac})	AL Value (nH)/Set	μ_e Approx	P_v (W/set)	
CF292	1800 ±20%	4800 +30%/-20%	≈1600	≤6.5(100mT,25kHz, 100°C)	
CF139	2100 ±20%	5700 +30%/-20%	≈1900	≤5.5(100mT,25kHz, 100°C)	
CF297	2300 ±20%	5900 +30%/-20%	≈2000	≤5.0(100mT,25kHz, 100°C)	
CF295	3000 ±20%	6750 +30%/-20%	≈2150	≤5.5(100mT,25kHz, 100°C)	

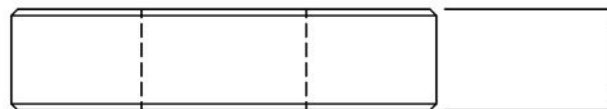
(B) 36.2±1.2

(D) 48.0±0.9



(C) 76.0±0.5

(A) 93.0±1.8



(F) 30.0±0.6