

Appearance & Shape: To be free from any defect such as flow, burrs, unevenness etc, As per IEC standards. Effective Parameters irrespective of material grade (per piece)

- Effective Length (L_e): 213.8mm
- Effective Area (A_e): 327.8mm²
- Effective Area (A_{Min}): 327.8mm²
- Effective Volume (V_e): 70030mm³
Approximate weight : 340g/pc



T8720 Coated (Green)

Test Conditions : 10kHz/150mV/N=01/Lo=Zero/25deg.C

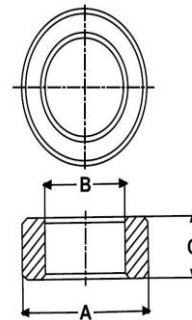
Dimension	Nominal (in mm)	Maximum (in mm)	Minimum (in mm)
A	87.4	88.75	86.05
B	54.0	55.0	53.0
C	20.0	20.45	19.55

Material Grade	Initial Permeability (μ_{iac})	AL Value (nH)	Approx.ue	D.Strength (kV)
CF139	2100 \pm 20%	2350 +30%/-20%	\approx 2100	\geq 2.0
CF197	7000 \pm 20%	12500 +30%/-20%	\approx 6500	\geq 2.0
CF275	7000 \pm 20%	11500 +30%/-20%	\approx 6000	\geq 2.0

Dimensions(Un-coated Cores)

Dimensions(Coated Cores)

Dimension	Nominal (in mm)	Maximum (in mm)	Minimum (in mm)
A	-	89.45	-
B	-	-	52.3
C	-	21.15	-



1.Coating material for the product is in compliance with RoHS directive 2002/95/EC.

2.Ferrite material in compliance with RoHS directive 2002/95/EC.