

Appearance & Shape: To be free from any defect such as flow, burrs, unevenness etc, As per IEC standards. Effective Parameters irrespective of material grade (per piece)

Effective Length ( $L_e$ ): 227.1mm

Effective Area ( $A_e$ ): 171.1mm<sup>2</sup>

Effective Area ( $A_{Min}$ ): 171.1mm<sup>2</sup>

Effective Volume ( $V_e$ ): 38855mm<sup>3</sup>

Approximate weight : 185g/pc



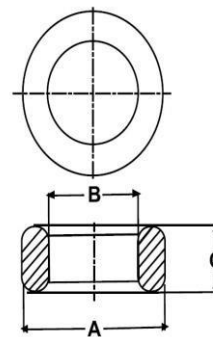
T8515OL (Un-Coated)

Test Conditions: 10kHz/150mV/CFR COIL,N=01/Lo=Zero/25°C

Material Grade	Initial Permeability ( $\mu_{iac}$ )	AL Value (nH)
CF196	2000 $\pm$ 20%	1900 +30%/-20%
CF139	2100 $\pm$ 20%	2000 +30%/-20%
CF130	3000 $\pm$ 20%	2800 +30%/-20%
CF195A	5000 $\pm$ 20%	4700 +30%/-20%
CF265	5000 $\pm$ 20%	4700 +30%/-20%
CF190	6000 $\pm$ 20%	5700 +30%/-20%
CF197	7000 $\pm$ 20%	6600 +30%/-20%
CF199	9000 $\pm$ 20%	8000 $\pm$ 30%

Dimensions :(Un-coated Cores)

Dimension	Nominal (in mm)	Maximum (in mm)	Minimum (in mm)
A	85.0	86.5	83.5
B	62.0	63.5	60.5
C	15.0	16.0	14.0



**Prodin Ferrite S.L.**

Calle A, 27, 08620 Sant Vicenç dels Horts, Barcelona (Spain)

Tel.: +34 93 672 46 10

[info@prodinferrite.com](mailto:info@prodinferrite.com) [www.prodinferrite.com](http://www.prodinferrite.com)