

Appearance & Shape: To be free from any defect such as flow, burrs, unevenness etc, As per IEC standards. **Effective Parameters irrespective of material grade (per piece)**

- Effective Length (L_e): 85.5 mm
- Effective Area (A_e): 127.0mm²
- Effective Area (A_{Min}): 127.0mm²
- Effective Volume (V_e): 10858mm³

Approximate weight : 54.0g/pc



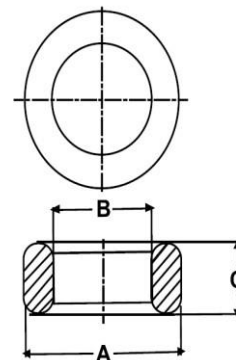
T3421 OL (Un- Coated)

Test Conditions: 10kHz/150mV/CFR COIL,N=01/Lo=Zero/25°C

Material Grade	Initial Permeability (μ_{iac})	AL Value (nH)
CF196	2000 \pm 20%	3700+30%/-20%
CF139	2100 \pm 20%	3900+30%/-20%
CF130	3000 \pm 20%	5600+30%/-20%
CF195A	5000 \pm 20%	9300+30%/-20%
CF265	5000 \pm 20%	9300+30%/-20%
CF190	6000 \pm 20%	11200+30%/-20%

Dimensions(Un-coated Core)

Dimension	Nominal (in mm)	Maximum (in mm)	Minimum (in mm)
A	34.0	34.7	33.3
B	21.8	22.3	21.3
C	21.0	21.4	20.6



Prodin Ferrite S.L.

Calle A, 27, 08620 Sant Vicenç dels Horts, Barcelona (Spain)

Tel.: +34 93 672 46 10

info@prodinferrite.com www.prodinferrite.com