

Appearance & Shape: To be free from any defect such as flow, burrs, unevenness etc, As per IEC standards. Effective Parameters irrespective of material grade (per piece)

- Effective Length (L_e): 255.3mm
 - Effective Area (A_e): 391.9mm²
 - Effective Area (A_{Min}): 391.9mm²
 - Effective Volume (V_e): 100052mm³
- Approximate weight : 450g/pc



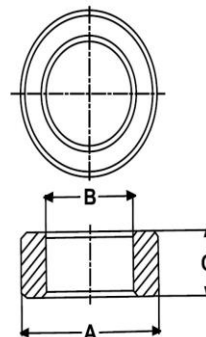
T10222 Coated (Green)

Test Conditions: 10 kHz & 100kHz/150mV/N=01/Lo=Zero/25°C

Material Grade	Initial Permeability (μ_{iac})	AL Value (nH) 10kHz	AL Value (nH) 100kHz	D.Strength (kV)
CF265	5000 \pm 20%	9300 \pm 25%	8800 \pm 25%	\geq 2.0
CF275	7000 \pm 20%	12000 \pm 25%	11500 \pm 25%	\geq 2.0

Dimension	Nominal (in mm)	Maximum (in mm)	Minimum (in mm)
A	102.0	104.0	100.0
B	65.8	67.1	64.5
C	22.0	22.5	21.5

Dimensions(Un-coated Core)



Dimensions(Coated Cores)

Dimension	Nominal (in mm)	Maximum (in mm)	Minimum (in mm)
A	-	104.8	-
B	-	-	63.5
C	-	23.3	-

1. Coating material for the product is in compliance with RoHS directive 2002/95/EC.

2. Ferrite material in compliance with RoHS

directive 2002/95/EC.