



# PRODUCT DATA APPROVAL SHEET

Core- ETD5922

Cosmo Ferrites Ltd. - INDIA

Appearance & Shape: To be free from any defect such as flow, burrs, unevenness etc, As per IEC standards.  
Effective Parameters irrespective of material grade (per set)

Parameter	Value	Unit
Effective Length ( $L_e$ ):	139.0	mm
Effective Area ( $A_e$ ):	368.0	mm <sup>2</sup>
Effective Area ( $A_{min}$ ):	368.0	mm <sup>2</sup>
Effective Volume ( $V_e$ ):	51200	mm <sup>3</sup>
Approximate weight(m):	262	g/set



ETD5922 Un-gapped (OL)

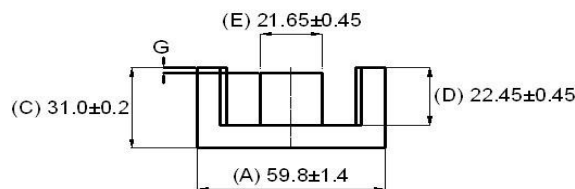
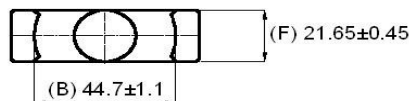
Test Conditions: 1 kHz/1mT/N=100/25°C

Material Grade	Initial Permeability ( $\mu_{iac}$ )	AL Value (nH)/Set	$\mu_e$ approx./Set	$P_v$ (W/set) (16kHz,200mT, 100°C)	$P_v$ (W/set) (25kHz,200mT, 100°C)	$P_v$ (W/set) (100kHz,100mT, 100°C)	$P_v$ (W/set) (100kHz,200mT, 100°C)
CF292	1800 ±20%	4700 +30%/-20%	≈1430	×	≤ 7.68	≤ 6.65	≤ 33.3
CF196	2000 ±20%	5100 +30%/-20%	≈1523	≤7.0	≤ 9.62	×	×
CF139	2100 ±20%	5300 +30%/-20%	≈1618	×	≤ 6.15	≤ 5.1	≤ 31
CF297	2300 ±20%	5500 +30%/-20%	≈1692	×	≤ 5.65	≤ 4.5	≤ 30.72

ETD5922 Gapped

Test Conditions: 1 kHz/300mV/N=100/25°C

Material Grade	Gap- Value (mm)/Pc	S, T		D	
		AL Approx. (nH)/Set	$\mu_e$ Approx./Set	AL Approx. (nH)/Set	$\mu_e$ Approx. /Set
CF196	0.20±0.02	≈1580	≈470	≈965	≈290
CF196	0.50±0.06	≈815	≈245	≈500	≈150
CF196	1.00±0.06	≈500	≈150	≈310	≈90
CF196	1.50±0.06	≈375	≈112	≈228	≈67
CF196	2.00±0.06	≈310	≈90	≈187	≈55
CF139	0.20±0.02	≈1587	≈477	≈970	≈292
CF139	0.50±0.06	≈829	≈249	≈508	≈153
CF139	1.00±0.06	≈508	≈153	≈311	≈93
CF139	1.50±0.06	≈381	≈115	≈233	≈70
CF139	2.00±0.06	≈311	≈93	≈190	≈57
CF297	0.20±0.02	≈1600	≈480	≈980	≈300
CF297	0.50±0.06	≈830	≈255	≈515	≈158
CF297	1.00±0.06	≈515	≈158	≈320	≈95
CF297	1.50±0.06	≈390	≈120	≈240	≈73
CF297	2.00±0.06	≈320	≈95	≈196	≈60



**Prodin Ferrite S.L.**

Calle A, 27, 08620 Sant Vicenç dels Horts, Barcelona (Spain)

Tel.: +34 93 672 46 10

[info@prodinferrite.com](mailto:info@prodinferrite.com) [www.prodinferrite.com](http://www.prodinferrite.com)