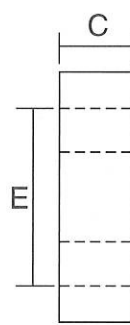
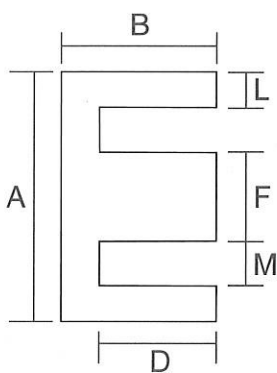
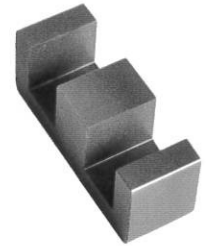


E Cores

Product Identification



S 43 17 E -060

Permeability: 60 μ

E core

Width: 17mm

Length: 43mm

S: Sendust SF: Si-Fe H: High Flux

Electromagnetic Properties

Part No.	Dimensions(mm)								Path Length (cm)	Cross Section Area (cm ²)	Volume (cm ³)	A _L (nH/N ²) \pm 8%			
	A	B	C	D (min)	E (min)	F	L (nom)	M (min)				026 μ	040 μ	060 μ	090 μ
S 1207E	12.7	6.4	3.56	4.42	8.89	3.56	1.78	2.64	2.96	0.130	0.385	16	25	38	57
S 1808E	19.3	8.1	4.78	5.54	13.9	4.78	2.39	4.65	4.01	0.228	0.914	26	35	48	69
S 2510E	25.4	9.6	6.53	6.22	18.8	6.22	3.17	6.25	4.85	0.385	1.87	39	52	70	100
S 3007E	30.4	15.01	7.06	9.7	19.5	6.96	5.11	6.46	6.56	0.601	3.94	33	46	71	92
S 3515E	34.54	14.1	9.35	9.65	25.3	9.32	4.45	7.87	6.94	0.840	5.83	56	75	102	146
S 4317E	40.9	16.5	12.5	10.4	28.3	12.5	6.0	7.9	7.75	1.520	11.8	88	119	163	234
S 4017E	42.8	21.1	10.8	15.0	30.4	11.9	5.95	9.27	9.84	1.280	12.6	56	76	105	151
S 4020E	42.8	21.1	15.4	15.0	30.4	11.9	5.95	9.27	9.84	1.830	18.0	80	108	150	217
S 4022E	42.8	21.1	20.0	15.0	30.4	11.9	5.95	9.27	9.84	2.370	23.3	104	140	194	281
S 5528E	54.9	27.6	20.6	18.5	37.5	16.8	8.38	10.3	12.30	3.500	43.1	116	157	219	
S 5530E	54.9	27.6	24.6	18.5	37.5	16.8	8.38	10.3	12.30	4.170	51.4	138	187	261	
S 6527E	65.1	32.5	27.0	22.2	44.2	19.7	10.0	12.1	14.70	5.400	79.4	162	230	300	
S 7228E	72.39	27.94	19.05	17.78	52.63	19.05	9.52	16.89	13.70	3.680	50.3	130	173	236	
S 8020E	80.01	38.1	19.81	28.14	59.28	19.81	9.91	19.81	18.50	3.890	72.1	103	145	190	
S 8044E	80.01	45.09	19.81	34.67	59.28	19.81	9.91	20.19	20.80	3.890	80.9	91	140	210	
S 130LE	130.3	32.5	54.0	22.0	108.4	20.0	10.0	44.2	21.90	10.80	237	254	391	586	
S 160LE	160.0	38.1	39.6	28.1	138.2	19.8	9.9	59.3	27.30	7.780	212	180	277	415	

※SF (Si-Fe) ,S(Sendust) ,H(High Flux)and customized designs are also available.

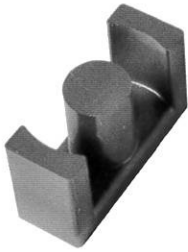


Prodin Ferrite S.L.

CalleA, 27, 08620 Sant Vicenç dels Horts, Barcelona (Spain)

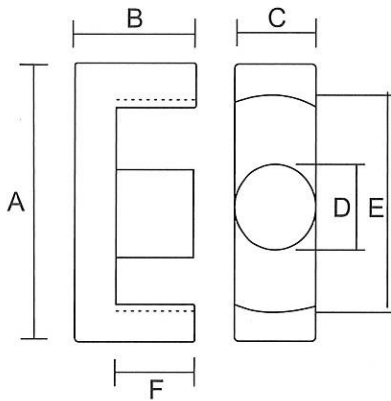
Tel.: +34 93 672 46 10

info@prodinferrite.com www.prodinferrite.com



Product Identification

ER Cores



S 25 07 ER-E9.3-060

Permeability: 60 μ

Height of ER core

ER core

Width: 7mm

Length: 25mm

S: Sendust SF: Si-Fe H: High Flux

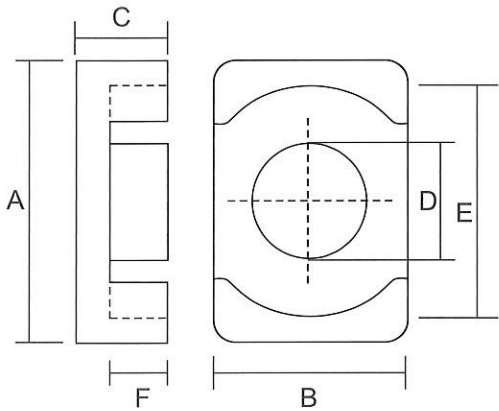
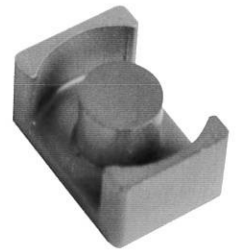
Electromagnetic Properties

Part No.	Dimensions(mm)						Path Length (cm)	Cross Section Area (cm ²)	Volume (cm ³)	A _L (nH/N ²) \pm 12%		
	A	B	C	D	E	F				026 μ	040 μ	060 μ
SF2507ER-E9.3	25.5	9.3	7.5	7.5	19.8	6.2	5.10	0.450	2.30	39	53	73
SF2507ER-E11	25.5	11.0	7.5	7.5	19.8	7.9	5.78	0.450	2.60	34	47	65
SF3010ER-E15.8	30.6	15.8	9.8	9.8	22.0	11	8.66	0.754	6.53	38	53	72
SF3511ER-E15.8	35.0	15.8	11.3	11.3	25.6	9.8	8.30	1.078	8.95	57	78	108
SF3511ER-E20.7	35.0	20.7	11.3	11.3	25.6	14.7	10.27	1.078	11.07	46	63	87
SF4013ER-E17.4	40.0	17.4	13.3	13.3	29.0	10.4	9.13	1.049	9.58	72	99	135
SF4013ER-E22.4	40.0	22.4	13.3	13.3	29.0	15.4	11.13	1.491	16.59	59	81	111
SF4215ER-E22.4	42.0	22.4	15.5	15.5	29.4	15.4	10.46	2.026	21.19	84	115	158
SF4215ER-E25.4	42.0	25.4	15.5	15.5	29.4	18.4	11.84	2.026	23.99	75	103	142
SF4917ER-E18.8	49.0	18.8	17.2	17.2	36.5	12.2	9.57	2.353	22.52	99	136	185
SF4917ER-E24.7	49.0	24.7	17.2	17.2	36.5	18.1	11.93	2.353	28.07	79	109	149

※SF (Si-Fe) ,S(Sendust) ,H(High Flux)and customized designs are also available.

EQ Cores

Product Identification



S 2014 EQ-E8.1-060

Permeability: 60 μ

Height OF EQ core

EQ core

Width: 14 mm

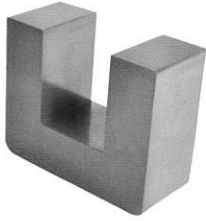
Length: 20mm

S: Sendust SF: Si-Fe H: High Flux

Electromagnetic Properties

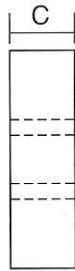
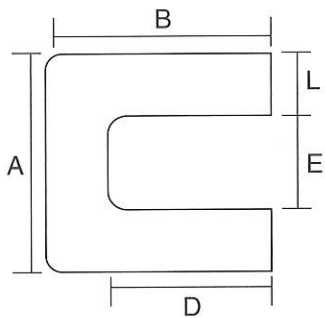
Part No.	Dimensions(mm)						Path Length (cm)	Cross Section Area (cm ²)	Volume (cm ³)	A _L (nH/N ²) $\pm 12\%$		
	A	B	C	D	E	F				026 μ	040 μ	060 μ
S2014EQ-E8.1	20.5	14.0	8.1	8.8	18.0	5.7	4.52	0.608	2.75	44	68	101
S2014EQ-E10.1	20.5	14.0	10.1	8.8	18.0	7.7	5.32	0.608	3.23	37	57	85
S2619EQ-E10.1	26.5	19.0	10.1	12.0	22.6	6.8	5.47	1.198	6.55	72	110	165
S2619EQ-E12.4	26.5	19.0	12.4	12.0	22.6	9.1	6.39	1.198	7.66	61	94	141
S3222EQ-E10.3	32.0	22.0	10.3	13.5	27.6	6.6	6.03	1.523	9.18	83	127	190
S3222EQ-E15.2	32.0	22.0	15.2	13.5	27.6	11.5	7.99	1.523	12.17	62	96	144
S3626EQ-E17.4	36.0	26.0	17.4	14.4	32.0	13.4	9.47	1.808	17.12	62	96	144
S4128EQ-E19.9	41.5	28.0	19.9	14.9	36.5	15.4	11.52	1.997	23.01	57	87	131
S5032EQ-E25	50.0	32.0	25.0	20.0	44.0	19.5	13.34	3.141	41.90	77	118	178
S6542EQ-E30.0	65.0	42.0	30.0	26.0	57.2	22.8	16.53	5.309	87.76	105	161	242

※SF (Si-Fe) ,S(Sendust) ,H(High Flux)and customized designs are also available.



Product Identification

U Cores



SF 41 41 U - E20 - 060

Permeability: 60 μ
Height: 20mm
U Cores
Width: 41mm
Length: 41mm
SF: Si-Fe S: Sendust H: High Flux

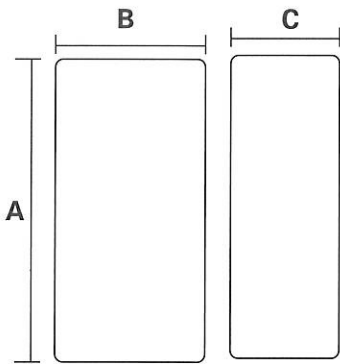
Electromagnetic Properties

Part No.	Dimensions(mm)						Path Length (cm)	Cross Section Area (cm ²)	Volume (cm ³)	A _L (nH/N ²) $\pm 12\%$		
	A	B	C	D	E	L				026 μ	040 μ	060 μ
SF3536U-E20	35.0	36.0	20.0	25.0	13.0	11.0	16.90	2.200	37.18	43	65	98
SF3536U-E25	35.0	36.0	25.0	25.0	13.0	11.0	16.90	2.750	46.48	53	82	123
SF4141U-E20	41.0	41.0	20.0	28.0	15.0	13.0	19.30	2.600	50.18	44	68	102
SF4141U-E25	41.0	41.0	25.0	28.0	15.0	13.0	19.30	3.250	62.73	55	85	127
SF4141U-E30	41.0	41.0	30.0	28.0	15.0	13.0	19.30	3.900	75.27	66	102	152
SF5251U-E25	52.0	51.0	25.0	35.0	20.0	16.0	24.30	4.000	97.20	54	83	124
SF5251U-E30	52.0	51.0	30.0	35.0	20.0	16.0	24.30	4.800	116.6	65	99	149
SF6361U-E30	63.0	60.5	30.0	41.5	25.0	19.0	29.10	5.700	165.9	64	98	148
SF6361U-E35	63.0	60.5	35.0	41.5	25.0	19.0	29.10	6.650	193.5	75	115	172
SF7965U-E30	79.0	64.5	30.0	42.5	35.0	22.0	32.60	6.600	215.2	66	102	153
SF7965U-E35	79.0	64.5	35.0	42.5	35.0	22.0	32.60	7.700	251.0	77	119	178

※SF (Si-Fe) ,S(Sendust) ,H(High Flux)and customized designs are also available.

Block Cores

Product Identification



SF 70 30 B - E20 - 060

Permeability: 60 μ

Height: 20mm

Block Cores

Width: 30mm

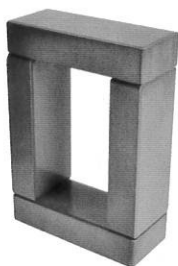
Length: 70mm

SF: Si-Fe S: Sendust H: High Flux

Electromagnetic Properties

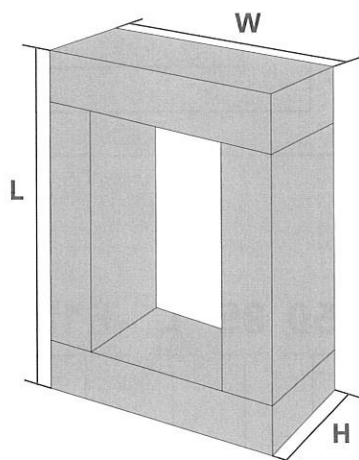
Part No.	Dimensions (mm)			Cross Section Area(cm ²)
	A	B	C	
SF5030B-E15	50.5	30.3	15	4.5
SF5030B-E20	50.5	30.3	20	6
SF6030B-E15	60.5	30.3	15	4.5
SF6030B-E20	60.5	30.3	20	6
SF7030B-E15	70.5	30.3	15	4.5
SF7030B-E20	70.5	30.3	20	6
SF8030B-E15	80.5	30.3	15	4.5
SF8030B-E20	80.5	30.3	20	6

※SF (Si-Fe) ,S(Sendust) ,H(High Flux)and customized designs are also available.



Product Identification

Block Cores

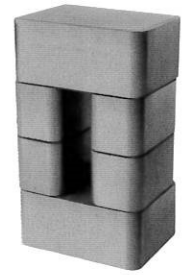


Unit Part No.	Assembled (L x W x Hmm)	Path Length (cm)	Window Area (cm ²)	Sectional Area (cm ²)	A _L (nH/N ²) ± 12%		
					026 μ	040 μ	060 μ
SF5030B-E15	80 x 50 x 30	18.71	15	4.5	95	121	181
SF5030B-E20	90 x 50 x 30	18.28	24	6	130	165	247
SF6030B-E15	90 x 60 x 30	22.71	18	4.5	79	100	149
SF6030B-E20	100 x 60 x 30	22.28	12	6	107	135	203
SF7030B-E15	100 x 70 x 30	26.71	28	4.5	67	85	127
SF7030B-E20	110 x 70 x 30	26.28	21	6	91	115	172
SF8030B-E15	110 x 80 x 30	30.71	40	4.5	58	74	110
SF8030B-E20	120 x 80 x 30	30.28	32	6	78	100	149

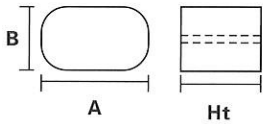
*SF (Si-Fe), S(Sendust), H(High Flux) and customized designs are also available.

Ellipse Cores

Product Identification



UPost



SF 35 20 L -E20 -060

Permeability: 60 μ

Height: 20mm

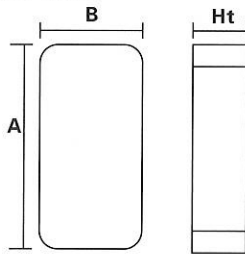
Ellipse Core

Width: 20mm

Length: 35mm

SF: Si-Fe S: Sendust H: High Flux

UPlate



SF 50 35 L -E18 -060

Permeability: 60 μ

Height: 18mm

Ellipse Core

Width: 35mm

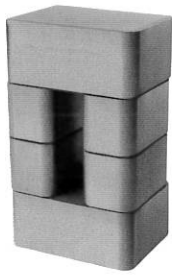
Length: 50mm

SF: Si-Fe S: Sendust H: High Flux

Post Part No.	Dimensions				Cross Section Area (cm ²)
	A Length (mm)	B Width (mm)	RC Radius (mm)	Ht Height (mm)	
SF3515L-E20	35	15	7.5	20	4.77
SF3515L-E25	35	15	7.5	25	4.77
SF3520L-E20	35	20	7.5	20	6.52
SF3520L-E25	35	20	7.5	25	6.52

Plate Part No.	Dimensions				Cross Section Area (cm ²)
	A Length (mm)	B Width (mm)	RC Radius (mm)	Ht Height (mm)	
SF5035L-E13	50	35	7.5	13.5	4.77
SF5035L-E18	50	35	7.5	18.5	6.52
SF6035L-E13	60	35	7.5	13.5	4.77
SF6035L-E18	60	35	7.5	18.5	6.52
SF7035L-E13	70	35	7.5	13.5	4.77
SF7035L-E18	70	35	7.5	18.5	6.52

※SF (Si-Fe) ,S(Sendust) ,H(High Flux)and customized designs are also available.



Product Identification

Ellipse Cores

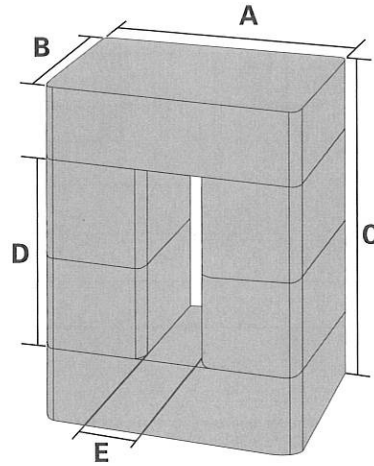


Plate Part No.	Post Part No.	1Leg Stack	Dimensions					Path Length (cm)	Cross Section Area (cm ²)	Window Area (cm ²)	A _L (nH/N ²) ± 12%		
			A Length (mm)	B Width (mm)	C Height (mm)	D Inner Height (mm)	E Inner Length (mm)				026 μ	040 μ	060 μ
SF5035L-E13	SF3515L-E20	2	50	35	67	40	20	16.47	4.77	8	113	146	218
	SF3515L-E25	2	50	35	77	50	20	18.47	4.77	10	101	130	195
	SF3515L-E20	3	50	35	87	60	20	20.47	4.77	12	91	117	176
SF5035L-E18	SF3520L-E20	2	50	35	77	40	10	18.04	6.52	4	158	204	306
	SF3520L-E25	2	50	35	87	50	10	20.04	6.52	5	141	182	273
	SF3520L-E20	3	50	35	97	60	10	22.04	6.52	6	127	164	245
SF6035L-E13	SF3515L-E20	2	60	35	67	40	30	18.47	4.77	12	101	130	195
	SF3515L-E25	2	60	35	77	50	30	20.47	4.77	15	91	117	176
	SF3515L-E20	3	60	35	87	60	30	22.47	4.77	18	83	107	160
SF6035L-E18	SF3520L-E20	2	60	35	77	40	20	18.04	6.52	8	141	182	273
	SF3520L-E25	2	60	35	87	50	20	20.04	6.52	10	127	164	245
	SF3520L-E20	3	60	35	97	60	20	22.04	6.52	12	115	149	223
SF7035L-E13	SF3515L-E20	2	70	35	67	40	40	20.47	4.77	16	91	117	176
	SF3515L-E25	2	70	35	77	50	40	22.47	4.77	20	83	107	160
	SF3515L-E20	3	70	35	87	60	40	24.47	4.77	24	76	98	147
SF7035L-E18	SF3520L-E20	2	70	35	77	40	30	20.04	6.52	12	127	164	245
	SF3520L-E25	2	70	35	87	50	30	22.04	6.52	15	115	149	223
	SF3520L-E20	3	70	35	97	60	30	24.04	6.52	18	106	136	204

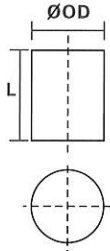
※SF (Si-Fe) ,S(Sendust) ,H(High Flux)and customized designs are also available.

Cylinder Cores

Product Identification



Upost



SF 30 30 P -060

Permeability: 60 μ

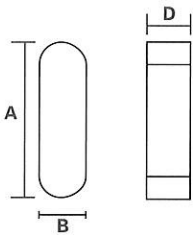
Cylinder Cores

Height: 30mm

OD: 30mm

SF: Si-Fe S: Sendust H: High Flux

UPlate



SF 54 20 L -E15.7-060

Permeability: 60 μ

Height: 15.7mm

Ellipse Core

Width: 20mm

Length: 54mm

SF: Si-Fe S: Sendust H: High Flux

Post Part No.	Dimensions		Cross Section Area (cm ²)	Plate Part No.
	OD(mm)	L(mm)		
SF2020P	20	20	3.14	SF5420L
SF2424P	24	24	4.52	SF6424L
SF2525P	25	25	4.91	SF6725L
SF2728P	27.5	28	6.00	SF7428L
SF3030P	30	30	7.07	SF8030L
SF3035P	30	35	7.07	SF8030L
SF6030P	60	30	28.27	

Plate Part No.	Dimensions				Cross Section Area (cm ²)	Post Part No.
	A Length (mm)	B Width (mm)	RC Radius (mm)	D Height (mm)		
SF5420L-E15.7	54	20	10.0	15.7	3.14	SF2020P
SF6424L-E18.8	64	24	12.0	18.8	4.52	SF2424P
SF6725L-E19.6	67	25	12.5	19.6	4.91	SF2525P
SF7428L-E21.7	74	27	13.7	21.7	6.00	SF2828P
SF8030L-E23.5	80	30	15.0	23.5	7.07	SF3030P

※SF (Si-Fe) ,S(Sendust) ,H(High Flux)and customized designs are also available.



Product Identification

Cylinder Cores

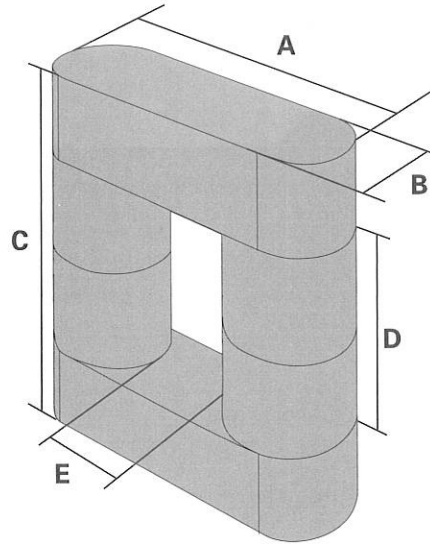


Plate Part No.	Post Part No.	1Leg Stack	Dimensions					Path Length (cm)	Cross Section Area (cm ²)	Window Area (cm ²)	A _L (nH/N ²) ± 12%		
			A Length (mm)	B Width (mm)	C Height (mm)	D Inner Height (mm)	E Inner Length (mm)				026 μ	040 μ	060 μ
SF5420L-E15.7	SF2020P	1	54	20	51.4	20	14	12.41	3.14	2.8	99	127	191
		2	54	20	71.4	40	14	16.41	3.14	5.6	75	96	144
		3	54	20	91.4	60	14	20.41	3.14	8.4	60	77	116
SF6424L-E18.8	SF2424P	1	64	24	61.6	24	16	14.72	4.52	3.84	120	154	232
		2	64	24	85.6	48	16	19.52	4.52	7.68	90	116	175
		3	64	24	109.6	72	16	24.32	4.52	11.52	72	93	140
SF6725L-E19.6	SF2525P	1	67	25	64.2	25	17	15.41	4.91	4.25	124	160	240
		2	67	25	89.2	50	17	20.41	4.91	8.5	94	121	181
		3	67	25	114.2	75	17	25.41	4.91	12.75	75	97	146
SF7428L-E21.7	SF2728P	1	74	27.5	71.4	28	19	17.13	6.00	5.32	136	176	264
		2	74	27.5	99.4	56	19	22.73	6.00	10.64	103	133	199
		3	74	27.5	127.4	84	19	28.33	6.00	15.96	83	106	160
SF8030L-E23.5	SF3030P	1	80	30	77	30	20	18.4	7.07	6	150	193	290
		2	80	30	107	60	20	24.4	7.07	12	113	146	218
		3	80	30	137	90	20	30.4	7.07	18	91	117	175

※SF (Si-Fe) ,S(Sendust) ,H(High Flux)and customized designs are also available.